



 **Hexcellence Industrial Corp.**
A Valve Manufacturer from Taiwan

No.9, Wugong 7th Rd., Wufeng Dist.,
Taichung City 413, Taiwan (R.O.C)

E-mail: hexcel.corp@msa.hinet.net

Tel: +886-4-2339 1177 Fax: +886-4-2339 0788



hexcel-valve.com

晶華廣告 04-2265 9395/2024.05

 **Hexcellence**
A Valve Manufacturer from Taiwan

- 1 / 2 / 3 PC BALL VALVES
- FLANGED BALL VALVES
- MULTI-WAYS BALL VALVES
- CHECK VALVES
- GATE VALVES
- GLOBE VALVES
- Y-STAINER
- NEEDLE VALVES



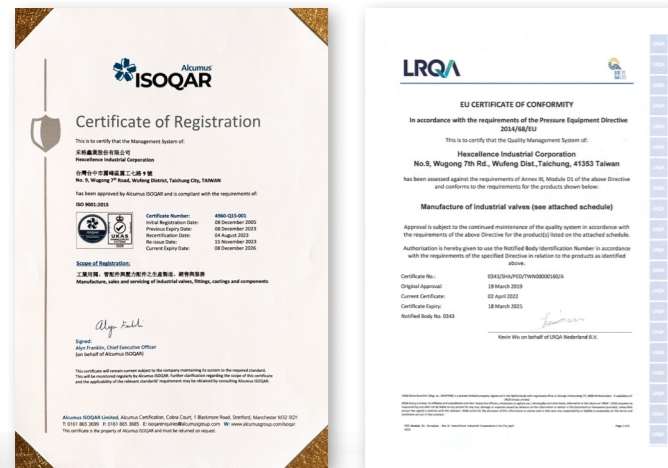
WE MAKE IT THE RIGHT WAY



hexcel-valve.com

Professional manufacturer of industrial valves, pressure equipments and components, such as Ball Valves, Gate Valves, Check Valves, Globe Valves, Y-Strainers, Needle Valves, and Fittings used for gaseous or hydraulic fluid.

Our company was established in year 2005 as a machining and assembly factory in Taiwan. The factory is equipped with most advanced facilities such as CNC Lathe Machines and Machining Centers. At the same year, our company was certified in accordance with ISO 9001 Quality Management System and European Pressure Equipment Directive (PED). During year 2011, we moved to our own land and built up our own building in Taiwan, Taichung, Wu Feng Industrial Park with more space and more quality control facility such as coordinate measuring machine in order to satisfy our customers' requirement.



ISO 9001

PED



▶▶ 1-PC Ball Valves

HE-111	1-PC 1000WOG Economy Ball Valve	p.01
HE-112	1-PC 1000WOG Hex. Ball Valve	p.02
HE-114	1-PC 2000WOG Hex. Ball Valve	p.03
HE-117	1-PC 1000WOG Round Body Ball Valve	p.04

▶▶ 2-PC Ball Valves

HE-211	2-PC 1000WOG Threaded End Ball Valve	p.05
HE-213	2-PC 1000WOG Threaded End Ball Valve	p.06
HE-214	2-PC 2000 / 1500WOG Threaded End Ball Valve	p.07
HE-2401	2-PC PN63 Threaded End Ball Valve	p.08
HE-2402	2-PC PN100 Threaded End Ball Valve	p.09
HE-2421	2-PC PN63 Threaded End Direct Mount Ball Valve	p.10
HE-2422	2-PC PN100 Threaded End Direct Mount Ball Valve	p.11

▶▶ 3-PC Ball Valves

HE-311	3-PC 1000 / 800 / 600WOG Threaded End Ball Valve	p.12
HE-312	3-PC 1000WOG Threaded End Mounting Pad Ball Valve	p.13
HE-313	3-PC 2000 / 1500WOG Threaded End Mounting Pad Ball Valve	p.14
HE-316TB	3-PC 1000WOG Tube Welding End Mounting Pad Ball Valve	p.15
HE-316TC	3-PC 1000WOG T-Clamp End Mounting Pad Ball Valve	p.16
HE-3501-SW	3-PC PN63 SW End Ball Valve	p.17
HE-3501-T	3-PC PN63 Threaded End Ball Valve	p.18
HE-3521B	3-PC PN63 Long BW / Short BW End, Direct Mount Ball Valve	p.19
HE-3521P	3-PC PN63 ASME / DIN / ISO Tube Welding END, Direct Mount Ball Valve	p.20
HE-3521T	3-PC PN63 Threaded End, Direct Mount Ball Valve	p.21

▶▶ Flanged End Ball Valves

HE-611	2-PC CL150 Flange End Mounting Pad Ball Valve	p.22
HE-612	2-PC PN16 / PN40 Flange End Mounting Pad Ball Valve	p.23
HE-613	2-PC JIS10K Flange End Ball Valve	p.24
HE-140	1-PC PN16 / 40 Direct Mount / Flange Connection Ball Valve	p.25
HE-3521F	3-PC PN40 Flange End, Direct Mount Ball Valve	p.26
HE-3540F	3-PC PN40 Flange End Ball Valve	p.27
HE-3563F	3-PC PN63 Flange End, Direct Mount Ball Valve	p.28

▶▶ Multi-Way Ball Valves

HE-3016F DN15~DN50	3-Ways PN16 / PN40 Flange End, Direct Mount Ball Valve	p.29
HE-3016F DN65~DN100	3-Ways PN16 / PN40 Flange End, Direct Mount Ball Valve	p.30
HE-3021T	3-Ways PN16 / PN40 Threaded End, Direct Mount Ball Valve	p.31
HE-3028TB	3-Ways 1000WOG Direct Mounting Pad Ball Valve	p.32

▶▶ Check Valves

HE-811	Wafer Check Valve for Flange connection 5", 6", 8"	p.33
HE-812	Wafer Check Valve for Flange connection 1/4"~4"	p.34
RV-PN40	PN40 Threaded End Y-Type Spring Check Valve	p.35

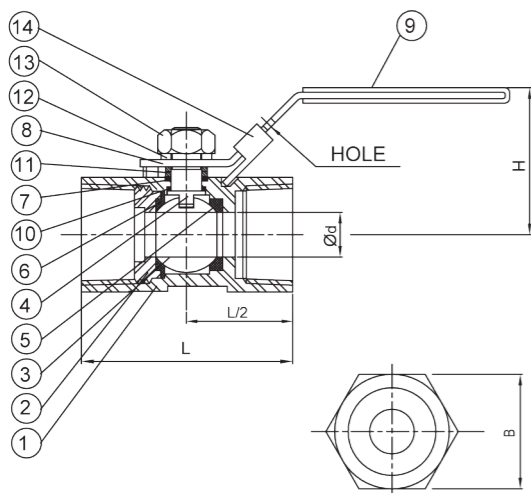
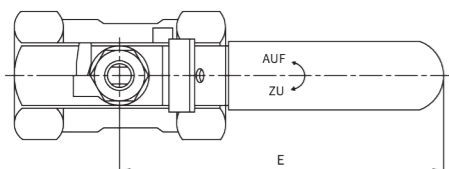
▶▶ Y-Strainer

YS-PN40	PN40 Y-Type Strainer	p.36
---------	----------------------	------



HE-111

1-PC 1000WOG Economy Ball Valve



Sizes range	NPS ¼"~ 2" (DN8 ~ DN50)
Port availability	Reduce port
Working pressure	1000WOG
Temp. rating	-10°C~180°C
Body material	ASTM A351, CF8M
Trim material	SS ball & stem
End connection	Threaded end
Seat material	PTFE
Note	Handle locking (option)

MATERIAL LIST

No.	PART NAME	SPECIFICATION
1	BODY	ASTM A351 GR.CF8M
2	SIDE ENTRY	CF8M
3	BALL	ASTM A351 GR.CF8M
4	STEM	SS316
5	BALL SEAT	PTFE
6	SIDE ENTRY SEAT	PTFE
7	STEM PACKING	PTFE
8	HANDLE	SS304
9	SLEEVE	VINYL GRIP
10	THRUST WASHER	PTFE
11	GLAND	SS304
12	WASHER	SS304
13	NUT	SS304
14	LOCKING DEVICE (option)	SS304

DIMENSIONS

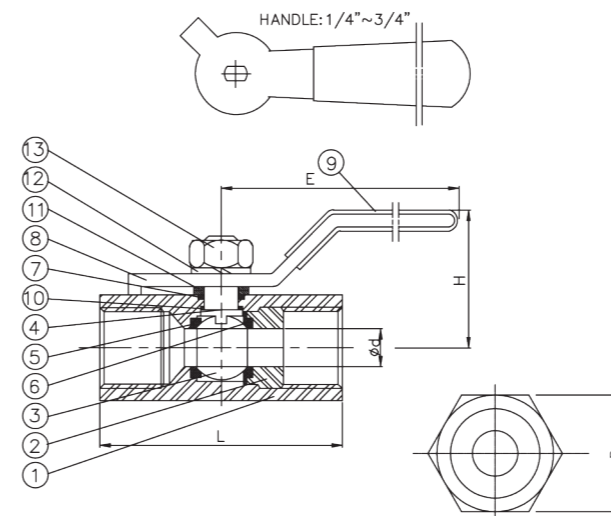
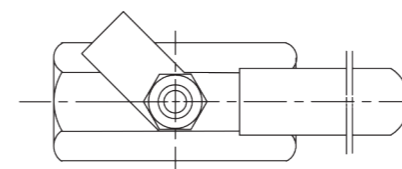
UNIT : mm

SIZE		d	E	H	B	L
NPS	DN					
¼"	8	5	66	33	17	39
⅜"	10	7	77	38	21	44
½"	15	9.2	95	41	25	56
¾"	20	12.5	95	45	32	58
1"	25	15	109	50	38	71
1¼"	32	20	109	60	50	78
1½"	40	25	139	65	53	83
2"	50	32	139	70	66.5	100



HE-112

1-PC 1000WOG Hex. Ball Valve



Sizes range	NPS ¼"~ 2" (DN8 ~ DN50)
Port availability	Reduce port
Working pressure	1000WOG
Temp. rating	-10°C~180°C
Body material	ASTM A351, CF8M
Trim material	SS ball & stem
End connection	Threaded end
Seat material	PTFE
Note	Handle locking (option)

MATERIAL LIST

No.	PART NAME	SPECIFICATION
1	BODY	ASTM A351 GR.CF8M
2	SIDE ENTRY	SS316
3	BALL	ASTM A351 GR.CF8M
4	STEM	SS316
5	BALL SEAT	PTFE
6	SIDE ENTRY SEAT	PTFE
7	STEM PACKING	PTFE
8	HANDLE	SS304
9	SLEEVE	VINYL GRIP
10	THRUST WASHER	PTFE
11	GLAND	SS304
12	WASHER	SS304
13	NUT	SS304

DIMENSIONS

UNIT : mm

SIZE		d	L	B	H	E
NPS	DN					
¼"	8	5	46.5	17.5	30	62
⅜"	10	7	51	21	30	82
½"	15	9.2	64	25	45	92
¾"	20	12.5	68	32	50	94
1"	25	15	77	38	68	118
1¼"	32	20	88	48	71	137
1½"	40	25	96	55	75	137
2"	50	32	108	68	85	151

HE-114

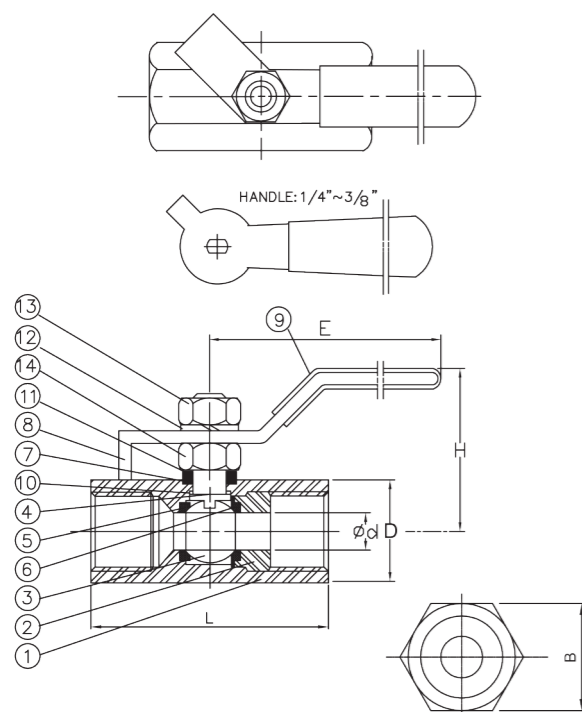
1-PC 2000WOG Hex. Ball Valve



Sizes range	NPS ¼"~ 2" (DN8 ~ DN50)
Port availability	Reduce port
Working pressure	2000WOG
Temp. rating	-10°C~180°C
Body material	ASTM A108, 1018 or AISI 1021 Carbon Steel
Trim material	SS ball & stem
End connection	Threaded end
Seat material	RPTFE
Note	Handle locking (option) Anti-rust surface finishing

MATERIAL LIST

No.	PART NAME	SPECIFICATION
1	BODY	ASTM A108 CL.1018 or AISI 1021 C.S
2	INSCREWED SET RETAINER	ASTM A108 CL.1018 or AISI 1021 C.S
3	BALL	SS304
4	STEM	SS316
5	BALL SEAT	RPTFE
6	CAP SEAL	RPTFE
7	PACKING	PTFE
8	HANDLE	SS304
9	HANDLE SLEEVE	VINYL GRIP
10	THRUST WASHER	PTFE
11	GLAND	SS304
12	WASHER	SS304
13	HANDLE NUT	SS304
14	STEM NUT	SS304



DIMENSIONS

UNIT : mm

SIZE		d	L	D	H	E
NPS	DN					
¼"	8	5	44	19	29	61
⅜"	10	7	48	23	35	80
½"	15	9.2	58	29	66	104
¾"	20	12.5	65.5	35	69	107
1"	25	15	86	41	75	118
1¼"	32	20	92	55	78	146
1½"	40	25	96	60	85	148
2"	50	32	114	73	98	150

HE-117

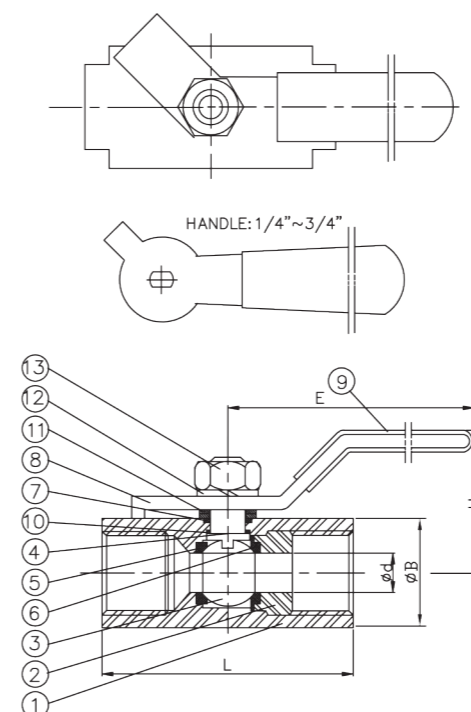
1-PC 1000WOG Round Body Ball Valve



Sizes range	NPS ¼"~ 2" (DN8 ~ DN50)
Port availability	Reduce port
Working pressure	1000WOG
Temp. rating	-10°C~180°C
Body material	ASTM A351, CF8M
Trim material	SS ball & stem
End connection	Threaded end
Seat material	PTFE
Note	Handle locking (option)

MATERIAL LIST

No.	PART NAME	SPECIFICATION
1	BODY	ASTM A351 G, CF8M
2	INSCREWED SET RETAINER	SS316
3	BALL	SS316
4	STEM	SS316
5	BALL SEAT	PTFE
6	CAP SEAL	PTFE
7	PACKING	PTFE
8	HANDLE	SS304
9	HANDLE SLEEVE	VINYL GRIP
10	THRUST WASHER	PTFE
11	GLAND	SS304
12	WASHER	SS304
13	HANDLE NUT	SS304



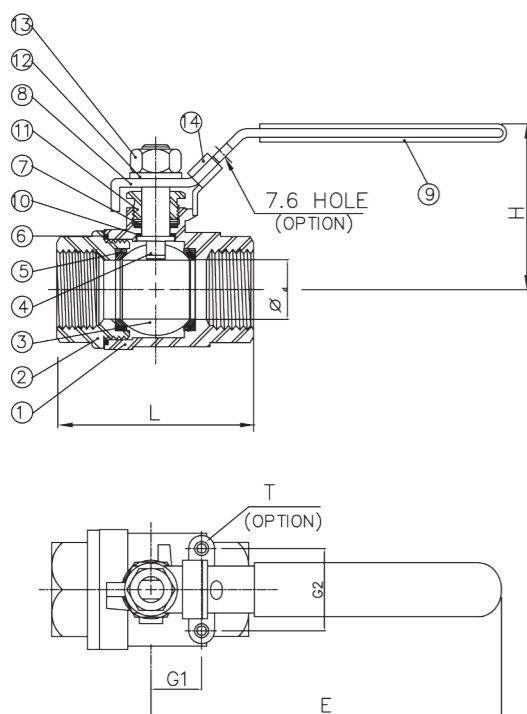
DIMENSIONS

UNIT : mm

SIZE		d	L	B	H	E
NPS	DN					
¼"	8	5	40	19	30	60
⅜"	10	7	45	23	33	80
½"	15	9	57	28.5	57	110
¾"	20	12.5	60	33.5	60	110
1"	25	15	70	42	70	124
1¼"	32	20	77	55	75	152
1½"	40	25	87	60	80	150
2"	50	32	104	74	85	155

HE-211

2-PC 1000WOG Threaded End Ball Valve



Sizes range	NPS ¼"~ 4" (DN8 ~ DN100)
Port availability	Full port
Working pressure	¼"~ 2", 1000WOG 2½"~3", 800WOG 4", 600WOG
Temp. rating	-10°C~180°C
Body material	ASTM A351, CF8M
Trim material	SS ball & stem
End connection	Threaded end
Seat material	PTFE
Note	Handle locking (option)

MATERIAL LIST

No.	PART NAME	SPECIFICATION
1	BODY	ASTM A351 GR.CF8M / A216 WCB
2	END CAP	ASTM A351 GR.CF8M / A216 WCB
3	BALL	ASTM A351 GR.CF8M / CF8
4	STEM	SS316 / SS316L
5	BALL SEAT	PTFE
6	END SEAL	PTFE
7	STEM PACKING	PTFE
8	HANDLE	SS304
9	HANDLE SLEEVE	VINYL GRIP
10	THRUST WASHER	PTFE
11	GLAND	SS304
12	HANDLE WASHER	SS304
13	HANDLE NUT	SS304
14	LOCKING PLATE (option)	SS304

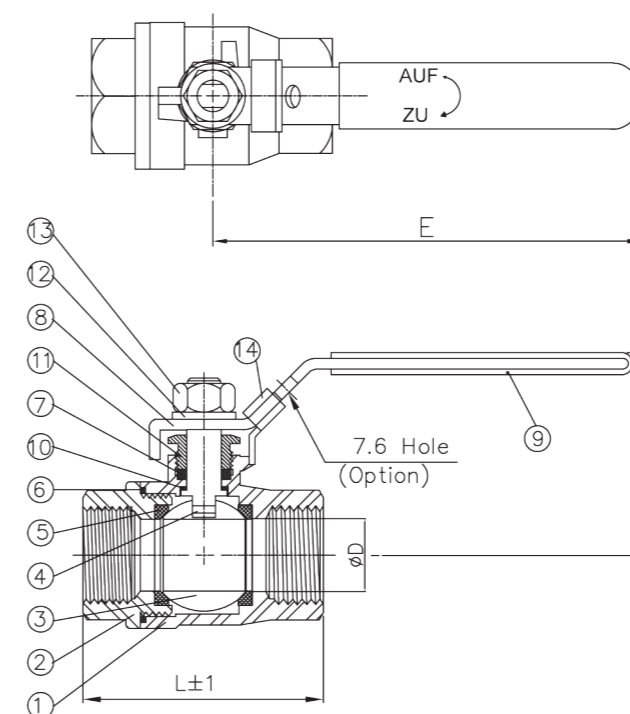
DIMENSIONS

UNIT : mm

SIZE		d	E	H	G1	G2	L	T (UNC)
NPS	DN							
¼"	8	11.6	100	50	12.7	28.5	54	¾ - 24
⅜"	10	12.5	100	50	12.7	28.5	54	¾ - 24
½"	15	15	120	56	12.7	28.5	60	¾ - 24
¾"	20	20	120	60	22	34.8	71	¾ - 24
1"	25	25	148	70	22	34.8	83	¾ - 24
1¼"	32	32	148	75	23.6	38	92	¾ - 24
1½"	40	38	164	84	23.6	38	111	¼ - 20
2"	50	50	164	94	23.6	38	125	¼ - 20
2½"	65	65	248	130	35	55	162	¼ - 20
3"	80	80	248	137	35	55	176	¼ - 20
4"	100	100	290	180	50	62	233	¼ - 20

HE-213

2-PC 1000WOG Threaded End Ball Valve



Sizes range	NPS ¼"~ 2" (DN8 ~ DN50)
Port availability	Full port
Working pressure	1000WOG
Temp. rating	-10°C~180°C
Body material	ASTM A351, CF8M
Trim material	SS ball & stem
End connection	Threaded end
Seat material	PTFE
Note	Handle locking (option)

MATERIAL LIST

No.	PART NAME	SPECIFICATION
1	BODY	CF8M
2	CAP	CF8M
3	BALL	CF8M
4	STEM	A276 316
5	BALL SEAT	PTFE (FDA)
6	BODY SEAL	PTFE (FDA)
7	STEM PACKING	PTFE (FDA)
8	HANDLE	SS304
9	HANDLE SLEEVE	VINYL
10	THRUST WASHER	PTFE (FDA)
11	GLAND	SS304
12	WASHER	SS304
13	NUT	SS304
14	LOCKING DEVICE (option)	SS304

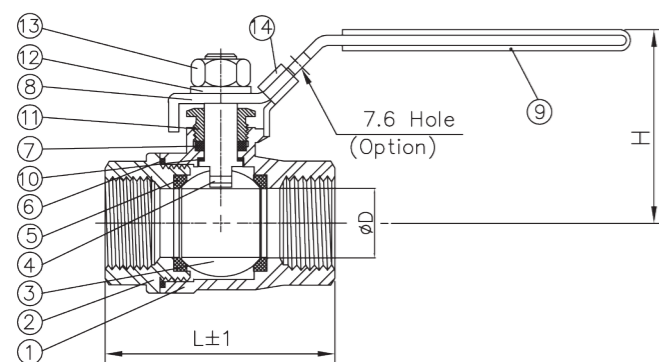
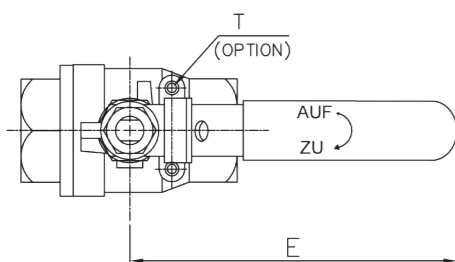
DIMENSIONS

UNIT : mm

SIZE		øD	E	H	L
NPS	DN				
¼"	8	11.6	100	51	53.5
⅜"	10	12.5	100	51	53.5
½"	15	15	100	53	57
¾"	20	20	122	60	64
1"	25	25	150	68	78
1¼"	32	32	150	73	93.5
1½"	40	38	164	87	105
2"	50	50	164	95	117

HE-214

2-PC 2000 / 1500WOG Threaded End Ball Valve



Sizes range	NPS ¼"~ 2" (DN8 ~ DN50)
Port availability	Standard Port
Working pressure	¼"~ 1", 2000WOG 1¼"~2", 1500WOG
Temp. rating	-10°C~180°C
Body material	ASTM A351, CF8M
Trim material	SS ball & stem
End connection	Threaded end
Seat material	PTFE
Note	Handle locking (option)

MATERIAL LIST

No.	PART NAME	SPECIFICATION
1	BODY	ASTM A351 GR.CF8M / A216 WCB
2	CAP	ASTM A351 GR.CF8M / A216 WCB
3	BALL	ASTM A351 GR.CF8M / CF8
4	STEM	SS316
5	BALL SEAT	PTFE
6	BODY SEAL	PTFE
7	STEM PACKING	PTFE
8	HANDLE	SS304
9	HANDLE SLEEVE	VINYL GRIP
10	THRUST WASHER	PTFE
11	GLAND	SS304
12	WASHER	SS304
13	NUT	SS304
14	LOCKING PLATE (option)	SS304

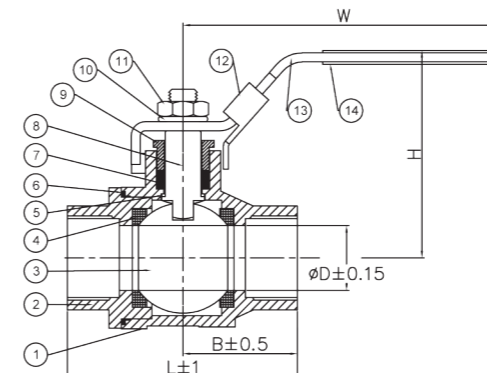
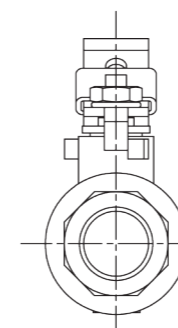
DIMENSIONS

UNIT : mm

SIZE		øD	L	H	E
NPS	DN				
¼"	8	9.5	52	55	100
⅜"	10	9.5	52	55	100
½"	15	12.7	64	58	100
¾"	20	15	71	60	130
1"	25	20	86	64	130
1¼"	32	25	94	66	165
1½"	40	32	102	79	165
2"	50	38.1	117	83	190

HE-2401

2-PC PN63 Threaded End Ball Valve



Sizes range	¼"~ 2" (DN08 ~ DN50)
Port availability	Full port
Nominal pressure	PN63
Temp. rating	-10°C~180°C
Body material	EN10213, 1.4408
Trim material	SS ball & stem
End connection	Threaded end
Seat material	PTFE
Note	Handle locking (option)

MATERIAL LIST

No.	PART NAME	SPECIFICATION
1	BODY	1.4408
2	END CAP	1.4408
3	BALL	1.4408
4	BALL STEM	PTFE
5	THRUST WASHER	PTFE
6	BODY SEAL	PTFE
7	STEM PACKING	PTFE
8	STEM	1.4401
9	GLAND	1.4301
10	WASHER	1.4301
11	NUT	1.4301
12	LOCKING (option)	1.4301
13	HANDLE	1.4301
14	COVER	Plastic

DIMENSIONS

UNIT : mm

SIZE		øD	B	L	H	W
NPS	DN					
¼"	8	11.5	27.2	54.8	54	98
⅜"	10	12.7	26.3	53.6	55.2	98
½"	15	16	33.6	68.2	61.5	128
¾"	20	20	38.1	76	66	128
1"	25	25	44	88.5	79	145
1¼"	32	32	49.4	99.9	85.2	145
1½"	40	38	60.4	120.6	100	208
2"	50	50.8	66.9	133.6	108.5	208

HE-2402

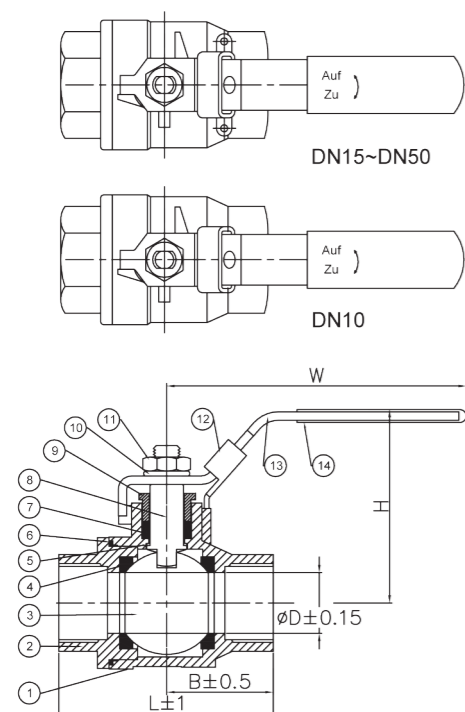
2-PC PN100 Threaded End Ball Valve



Sizes range	3/8" ~ 2" (DN10 ~ DN50)
Port availability	Full port
Nominal pressure	PN100
Temp. rating	-10°C~180°C
Body material	EN10213, 1.4408
Trim material	SS ball & stem
End connection	Threaded end
Seat material	PTFE
Note	Handle locking (option)

MATERIAL LIST

No.	PART NAME	SPECIFICATION
1	BODY	1.4408
2	END CAP	1.4408
3	BALL	CF8M
4	STEM	PTFE
5	THRUST WASHER	PTFE
6	BODY SEAL	PTFE
7	STEM PACKING	PTFE
8	STEM	A276 316
9	GLAND	SS304
10	WASHER	SS304
11	NUT	SS304
12	LOCKING (option)	SS304
13	HANDLE	SS304
14	SLEEVE	VINYL GRIP



DIMENSIONS

UNIT : mm

SIZE		ØD	B	L	H	W
NPS	DN					
3/8"	10	12.8	30.7	60	50	96
1/2"	15	15	38	75	53	96
3/4"	20	20	40	80	64	125
1"	25	25	45	90	66	125
1 1/4"	32	32	54	110	79	170
1 1/2"	40	38	60	120	83	170
2"	50	51	70	140	94	190

HE-2421

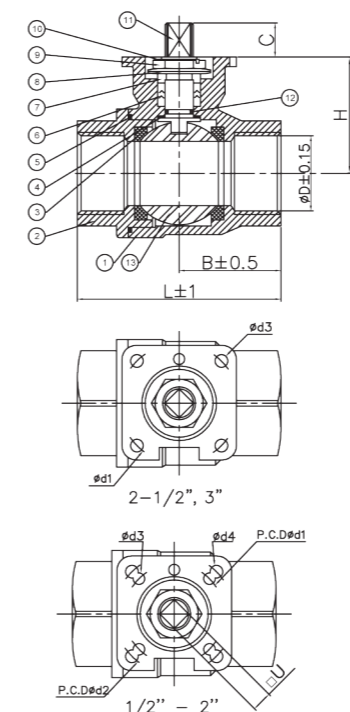
2-PC PN63 Threaded End Direct Mount Ball Valve



Sizes range	1/2" ~ 3" (DN15 ~ DN80)
Port availability	Full port
Nominal pressure	PN63
Temp. rating	-10°C~180°C
Body material	EN10213, 1.4408
Trim material	SS ball & stem
End connection	Threaded end
Seat material	PTFE
Note	Handle locking (option) ISO5211 Direct mounting pad

MATERIAL LIST

No.	PART NAME	SPECIFICATION
1	BODY	1.4408
2	END CAP	1.4408
3	BALL SEAT	PTFE
4	THRUST WASHER	PTFE
5	BODY SEAL	PTFE
6	STEM PACKING	PTFE
7	GLAND	1.4301
8	DISC SPRING	1.4310
9	NUT	1.4301
10	SECURING RING	1.4301
11	STEM	1.4401
12	O-RING	VINYL
13	BALL	1.4408



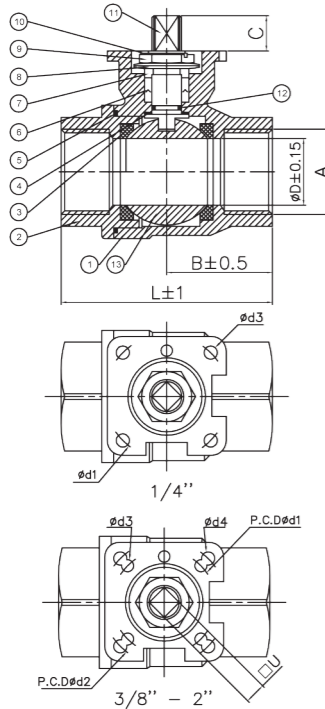
DIMENSIONS

UNIT : mm

SIZE		ØD	B	L	H	□U	Ød1	Ød2	Ød3	Ød4	ISO 5211	C
NPS	DN											
1/2"	15	15	30.6	64	35	9	36	42	5.5	5.5	F03, F04	7.5
3/4"	20	20	33	68	40.5	11	42	50	5.5	6.5	F04, F05	11
1"	25	25	37.8	75	44	11	42	50	5.5	6.5	F04, F05	11
1 1/4"	32	31.8	48.4	96.5	49.6	11	42	50	5.5	6.5	F04, F05	12
1 1/2"	40	38	50.9	102	53.5	11	42	50	5.5	6.5	F04, F05	12
2"	50	50.8	63	126	64.7	14	50	70	6.5	8.5	F05, F07	15
2 1/2"	65	65	74.7	149.5	90.5	17	70	--	8.5	--	F07	18
3"	80	76	82.4	165	99.7	17	70	--	8.5	--	F07	18

HE-2422

2-PC PN100 Threaded End Direct Mount Ball Valve



Sizes range	1/4" ~ 2" (DN8 ~ DN50)
Port availability	Full port
Nominal pressure	PN100
Temp. rating	-10°C~180°C
Body material	EN10213, 1.4408
Trim material	SS ball & stem
End connection	Threaded end
Seat material	PTFE
Note	Handle locking (option) ISO5211 Direct mounting pad

MATERIAL LIST

No.	PART NAME	SPECIFICATION
1	BODY	1.4408
2	END CAP	1.4408
3	BALL SEAT	15% G.F + PTFE
4	THRUST WASHER	PTFE
5	BODY SEAL	PTFE
6	STEM PACKING	PTFE
7	GLAND	1.4301
8	DISC SPRING	1.4310
9	NUT	1.4301
10	SECURING RING	1.4301
11	STEM	1.4401
12	O-RING	VITON
13	BALL	A351 CF8M

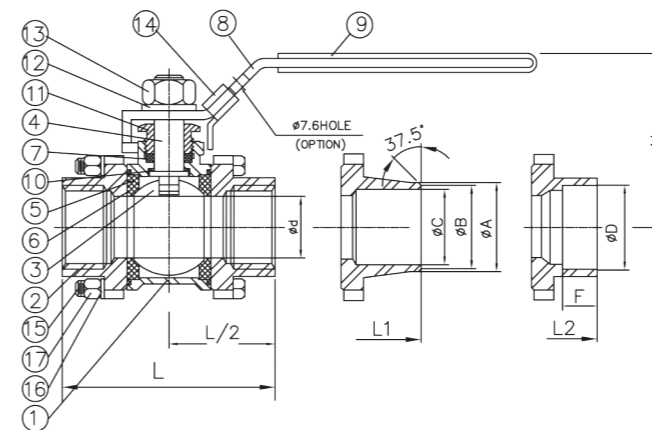
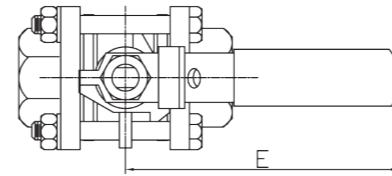
DIMENSIONS

UNIT : mm

SIZE		ϕD	A	B	L	$\square U$	$\phi d1$	$\phi d2$	$\phi d3$	$\phi d4$	ISO 5211	C
NPS	DN											
1/4"	8	11.5	DIN 2999 ISO 228	24.8	50	9	36	--	6	--	F03	7.2
3/8"	10	12.5	DIN 2999 ISO 228	30	60	9	36	42	6	6	F03, F04	7.2
1/2"	15	15	DIN 2999 ISO 228	37.5	75	9	36	42	6	6	F03, F04	8
3/4"	20	20	DIN 2999 ISO 228	40.1	80	11	42	50	6	7	F04, F05	11.7
1"	25	25	DIN 2999 ISO 228	45.2	90	11	42	50	6	7	F04, F05	10.7
1 1/4"	32	32	DIN 2999 ISO 228	55	109	11	42	50	6	7	F04, F05	11.0
1 1/2"	40	38	DIN 2999 ISO 228	60.5	120	11	42	50	6	7	F04, F05	10.5
2"	50	50.8	DIN 2999 ISO 228	69.9	140	14	50	70	7	9	F05, F07	15.3

HE-311

3-PC 1000 / 800 / 600WOG Threaded End Ball Valve



Sizes range	NPS 1/4" ~ 4" (DN8 ~ DN100)
Port availability	Full port
Working pressure	1/4" ~ 2", 1000WOG 2 1/2" ~ 3", 800WOG 4", 600WOG
Temp. rating	-10°C~180°C
Body material	ASTM A351, CF8M
Trim material	SS ball & stem
End connection	Threaded/SW/BW end
Seat material	PTFE
Note	Handle locking (option) On-line maintainable

MATERIAL LIST

No.	PART NAME	SPECIFICATION
1	BODY	1.0619 / 1.4408
2	END CAP	1.0619 / 1.4408
3	BALL	SS304 / SS316
4	STEM	SS304 / SS316
5	BALL SEATS	SWPC25 PTFE / CARBON
6	END SEAL	SWPC25 PTFE / CARBON
7	STEM PACKING	SWPC25 PTFE / CARBON
8	HANDLE	SS304
9	HANDLE SLEEVE	VINYL GRIP
10	THRUST WASHER	SWPC25 PTFE / CARBON
11	GLAND	SS304
12	HANDLE WASHER	SS304
13	HANDLE NUT	SS304
14	LOCKING PLATE (option)	SS304
15	BOLTS	SS304
16	BOLT WASHERS	SS304
17	BOLT NUTS	SS304

DIMENSIONS

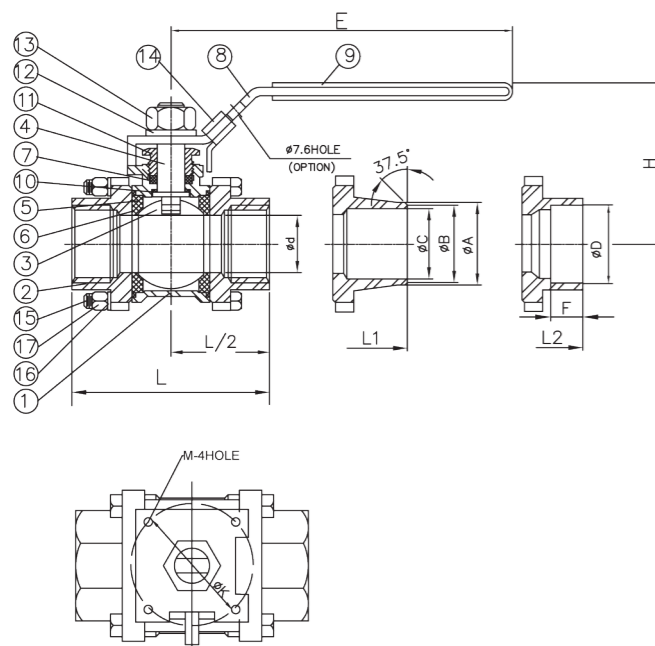
UNIT : mm

SIZE		ϕd	L	L1	L2	H	E	ϕA	ϕB	ϕC	ϕD	F	$\phi d4$	M	ISO 5211
NPS	DN														
1/4"	8	11.6	60	60	60	56	96	18	12	10	14	10.5	6.0	M12	F03, F04
3/8"	10	12.5	60	60	60	56	96	18	16	13	17.5	10.5	6.0	M12	F03, F04
1/2"	15	15	65	64	65	60	96	23	19	15.8	22	11	7.2	M12	F04, F05
3/4"	20	20	79	79	79	62	120	28	24	21	27.5	13.5	7.2	M16	F04, F05
1"	25	25	86	85	86	74	152	35	31.5	26.6	34.5	13.5	9.2	M16	F05, F07
1 1/4"	32	32	105	103	105	80	150	43	39	35	43.3	14	9.2	M16	F05, F07
1 1/2"	40	38	119	118	119	86	164	50	45	40.5	49.2	15	9.2	M16	F07
2"	50	50	133	134	133	99	164	61	56	52.5	61.2	17.5	9.2	M16	F07
2 1/2"	65	65	163	164	163	136	248	75	69	65	77	19	11.2	M16	F07, F10
3"	80	80	183	181	183	137	248	95	85	80	89.9	20	13.2	M16	F10, F12
4"	100	100	227	264	227	180	290	120	105	101	115	25	13.2	M20	F10, F12



HE-312

3-PC 1000WOG Threaded End Mounting Pad Ball Valve



Sizes range	NPS ¼"~ 4" (DN8 ~ DN100)
Port availability	Full port
Working pressure	¼"~ 2", 1000WOG 2½"~3", 800WOG 4", 600WOG
Temp. rating	-10°C~180°C
Body material	ASTM A351, CF8M
Trim material	SS ball & stem
End connection	Threaded/SW/BW end
Seat material	PTFE
Note	Handle locking (option) On-line maintainable ISO5211 mounting pad

MATERIAL LIST

No.	PART NAME	SPECIFICATION
1	BODY	ASTM A351 GR.CF8M / A216 WCB
2	END CAP	ASTM A351 GR.CF8M / A216 WCB
3	BALL	ASTM A351 GR.CF8M / CF8M
4	STEM	SS316
5	BALL SEAT	PTFE
6	END SEAL	PTFE
7	STEM PACKING	PTFE
8	HANDLE	SS304
9	HANDLE SLEEVE	VINYL GRIP
10	THRUST WASHER	PTFE
11	GLAND	SS304
12	HANDLE WASHER	SS304
13	HANDLE NUT	SS304
14	LOCKING PLATE (option)	SS304
15	BOLTS	SS304
16	BOLT WASHERS	SS304
17	BOLT NUTS	SS304

DIMENSIONS

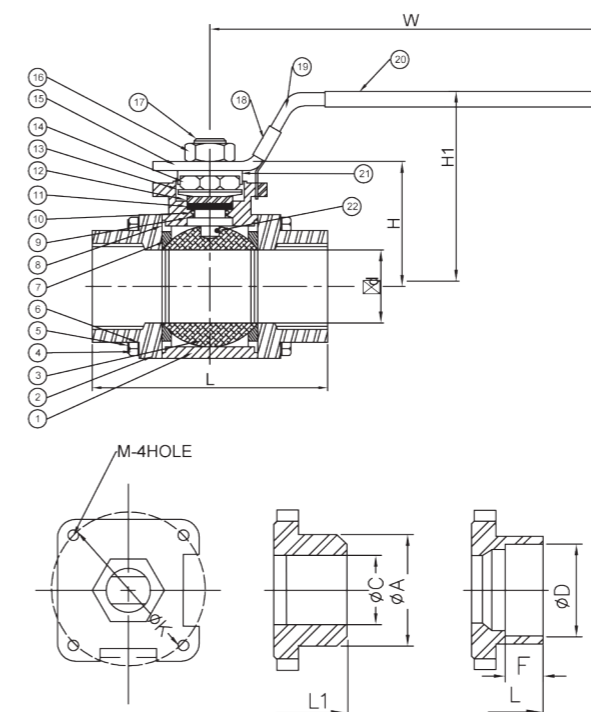
UNIT : mm

SIZE		ød	L	L1	L2	H	E	øA	øB	øC	øD	øK	M
NPS	DN												
¼"	8	11.6	65	65	65	56	96	18	12	10	14	36	M5
⅜"	10	12.5	65	65	65	56	96	18	16	13	17.5	36	M5
½"	15	15	65	64	65	60	96	23	19	15.8	22	36	M5
¾"	20	20	79	79	79	62	120	28	24	21	27.5	36	M5
1"	25	25	86	85	86	74	152	35	31.5	26.6	34.5	42	M5
1¼"	32	32	105	103	105	80	150	43	39	35	43.3	42	M5
1½"	40	38	119	118	119	86	164	50	45	40.5	49.2	50	M6
2"	50	50	133	134	133	99	164	61	56	52.5	61.2	50	M6
2½"	65	65	163	164	163	136	248	75	69	65	77	70	M8
3"	80	80	183	181	183	137	248	95	85	80	89.9	102	M10
4"	100	100	227	264	227	180	290	120	105	101	115	102	M10



HE-313

3-PC 2000/1500WOG Threaded End Mounting Pad Ball Valve



Sizes range	NPS ½"~ 2" (DN15 ~ DN50)
Port availability	Reduce port
Working pressure	½"~ 2", 2000WOG
Temp. rating	-10°C~180°C
Body material	ASTM A351, CF8M
Trim material	SS ball & stem
End connection	Threaded end
Seat material	PTFE
Note	Handle locking (option) ISO5211 mounting pad

MATERIAL LIST

No.	PART NAME	SPECIFICATION
1	BODY	ASTM A351 GR.CF8M / A216WCB
2	CAP	ASTM A351 GR.CF8M / A216WCB
3	BALL	ASTM A351 GR.CF8M / CF8
4	NUT	SS304
5	BOLT	SS304
6	WASHER	SS304
7	SEAT	PTFE
8	GASKET	PTFE
9	THRUST WASHER	POLYFILL TEFLON
10	O-RING	VITON
11	STEM PACKING	PTFE
12	GLAND RING	SS304
13	BEVEL WASHER	SS301
14	STEM NUT	SS304
15	WASHER	SS304
16	NUT	SS304
17	STEM	SS316
18	LOCKING PLATE (option)	SS304
19	HANDLE	SS304
20	COVER	PLASTIC
21	HANDLE WASHERS	SS304
22	STATIC DEVICE	SS316

DIMENSIONS

UNIT : mm

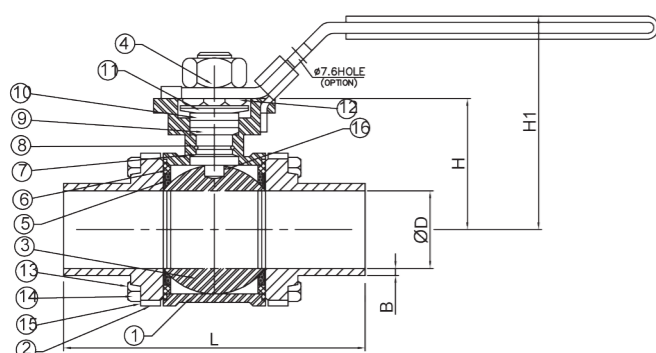
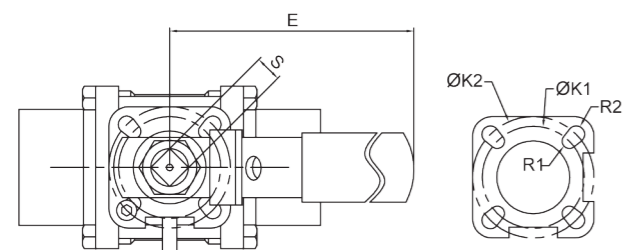
SIZE		ød	øC	øD	øA	L	L1	H	H1	W	K	M
NPS	DN											
½"	15	11	15.8	22.4	21.3	70	67	28.5	57	121.5	36	M5
¾"	20	14.3	21	27.4	27.1	74	72	31.7	60	121.5	36	M5
1"	25	20	26.6	34.2	34.1	99	97	38.5	75	151	42	M5
1¼"	32	25.4	35.1	43	42.2	110	108	43.5	77	151	42	M5
1½"	40	31.8	40.9	49	48.3	117	117	52	86	178	50	M6
2"	50	38.1	52.5	61.1	60.3	128	128	57.6	92	178	50	M6



HE-316 TB

3-PC 1000WOG Tube Welding End Mounting Pad Ball Valve

Sizes range	NPS ½"~ 4" (DN8 ~ DN100)
Port availability	Full port
Working pressure	½"~ 2", 1000WOG 2½"~3", 800WOG 4", 600WOG
Temp. rating	-10°C~180°C
Body material	ASTM A351, CF8M
Trim material	SS ball & stem
End connection	Tube welding end
Seat material	PTFE
Note	Handle locking (option) On-line maintainable ISO5211 Direct mounting pad



MATERIAL LIST

No.	PART NAME	SPECIFICATION
1	BODY	ASTM A351 GR.CF8M
2	CAP	ASTM A351 GR.CF8M
3	BALL	ASTM A351 GR.CF8M
4	STEM	ASTM A276 TYPE 316
5	SEAT	PTFE
6	GASKET	PTFE
7	THRUST WASHER	POLYFILL TEFLON
8	O-RING	VITON
9	STEM PACKING	PTFE
10	GLAND RING	ASTM A276 TYPE 304
11	BEVEL WASHER	ASTM A276 TYPE 301
12	STEM NUTS	ASTM A276 TYPE 304
13	BOLTS	ASTM A276 TYPE 304
14	BOLT NUTS	ASTM A276 TYPE 304
15	BOLT WASHERS	ASTM A276 TYPE 304
16	STATIC DEVICE	ASTM A276 TYPE 304

DIMENSIONS

UNIT : mm

SIZE		øD	øB	L	H	H1	S	M	ØK1	øK2	R1	R2	E
NPS	DN												
½"	15	15	1.5	97.5	43	71	9	42	36	42	3	3	116
¾"	20	20	1.5	100	46.7	74	9	42	36	42	3	3	116
1"	25	25	1.5	110.5	50.4	78	11	50	42	50	3	3.5	156
1¼"	32	32	1.5	132.5	55.6	94	11	50	42	50	3	3.5	156
1½"	40	38	1.5	147.5	68	107	14	70	50	70	3.5	4.5	181
2"	50	50	1.5	162.5	76	116	14	70	50	70	3.5	4.5	181
2½"	65	65	2	219.5	96	145	17	102	70	102	4.5	5.5	260
3"	80	80	2	293.5	106	154	17	102	70	102	4.5	5.5	260
4"	100	100	2	318	126	185	22	125	102	125	5.5	6.5	334.5



HE-316 TC

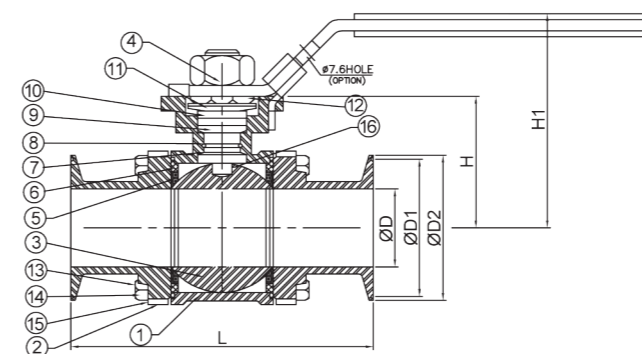
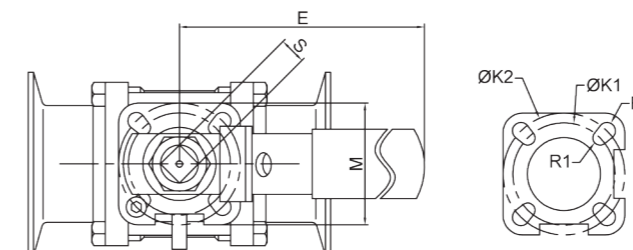
3-PC 1000WOG T-Clamp End Mounting Pad Ball Valve



Sizes range	NPS ½"~ 4" (DN8 ~ DN100)
Port availability	Full port
Working pressure	½"~ 2", 1000WOG 2½"~3", 800WOG 4", 600WOG
Temp. rating	-10°C~180°C
Body material	ASTM A351, CF8M
Trim material	SS ball & stem
End connection	T-clamp end
Seat material	PTFE
Note	Handle locking (option) On-line maintainable ISO5211 Direct mounting pad

MATERIAL LIST

No.	PART NAME	SPECIFICATION
1	BODY	ASTM A351 GR.CF8M
2	CAP	ASTM A351 GR.CF8M
3	BALL	ASTM A351 GR.CF8M
4	STEM	ASTM A276 TYPE 316
5	SEAT	PTFE
6	GASKET	PTFE
7	THRUST WASHER	POLYFILL TEFLON
8	O-RING	VITON
9	STEM PACKING	PTFE
10	GLAND RING	ASTM A276 TYPE 304
11	BEVEL WASHER	ASTM A276 TYPE 301
12	STEM NUTS	ASTM A276 TYPE 304
13	BOLTS	ASTM A276 TYPE 304
14	BOLT NUTS	ASTM A276 TYPE 304
15	BOLT WASHERS	ASTM A276 TYPE 304
16	STATIC DEVICE	ASTM A276 TYPE 304



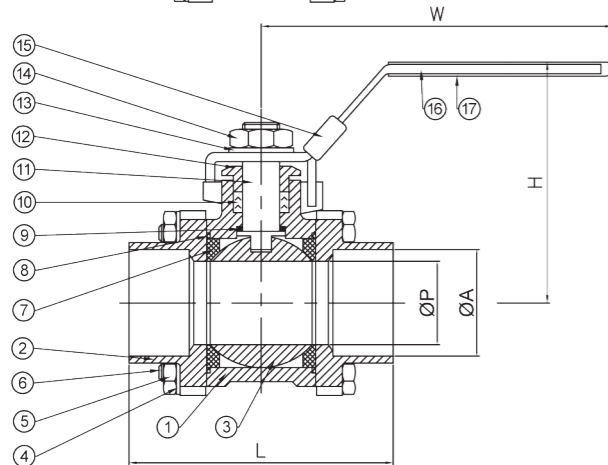
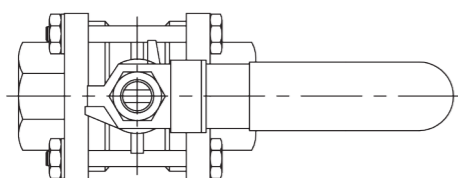
DIMENSIONS

UNIT : mm

SIZE		øD	L	H	H1	S	M	ØK1	øK2	R1	R2	ØD1	ØD2	E
NPS	DN													
½"	15	9.5	91	43	71	9	42	36	42	3	3	20.2	25	116
¾"	20	15.9	102	46.7	74	9	42	36	42	3	3	20.2	25	116
1"	25	22.2	114	50.4	78	11	50	42	50	3	3.5	43.6	50.4	156
1¼"	32	28.5	120	55.6	94	11	50	42	50	3	3.5	43.6	50.4	156
1½"	40	34.9	140	68	107	14	70	50	70	3.5	4.5	43.6	50.4	181
2"	50	47.6	156	76	116	14	70	50	70	3.5	4.5	56.3	63.9	181
2½"	65	60.3	197	96	145	17	102	70	102	4.5	5.5	70.6	77.4	260
3"	80	73	229	106	154	17	102	70	102	4.5	5.5	83.3	90.9	260
4"	100	97.6	243	126	185	22	125	102	125	5.5	6.5	110.3	118.9	334.5

HE-3501 SW

3-PC PN63 SW End Ball Valve



Sizes range	1/4"~ 4" (DN08 ~ DN100)
Port availability	Full port
Nominal pressure	PN63
Temp. rating	-10°C~180°C
Body material	EN10213, 1.4408
Trim material	SS ball & stem
End connection	Socket welding end
Anti-static	Anti-static (option)
Seat material	PTFE
Note	Handle locking (option) ISO5211 Direct mounting pad

MATERIAL LIST

No.	PART NAME	SPECIFICATION
1	BODY	1.4408
2	END CAP	1.4408
3	BALL	A351 CF8M
4	WASHER	1.4301
5	NUT	1.4301
6	BOLT	1.4301
7	BALL SEAT	PTFE
8	BODY SEAL	PTFE
9	THRUST WASHER	PTFE
10	STEM PACKING	PTFE
11	STEM	A276 316
12	GLAND	1.4301
13	WASHER	1.4301
14	NUT	1.4301
15	LOCKING(option)	1.4301
16	HANDLE	1.4301
17	COVER	PLASTIC

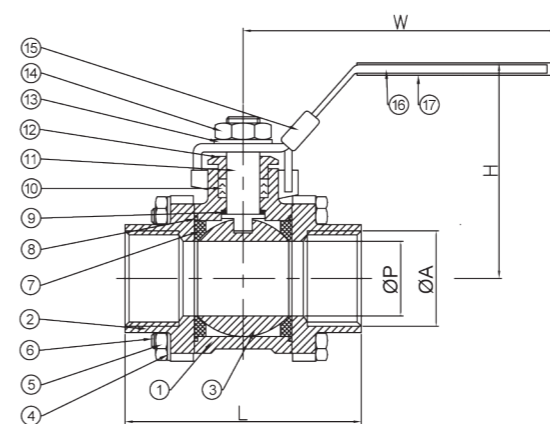
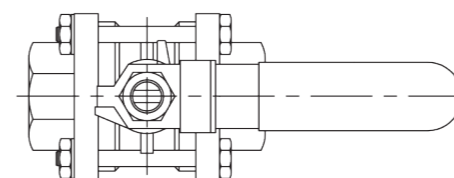
DIMENSIONS

UNIT : mm

SIZE		øA	øP	L	H	W
NPS	DN					
1/4"	8	14.2	10.6	60	55	97.5
3/8"	10	17.5	11.8	60	55	97.5
1/2"	15	22	16	75	64	125.5
3/4"	20	27.5	20	80	67	125.5
1"	25	34.5	25	90	83	143.5
1 1/4"	32	43.3	32	110	89	143.5
1 1/2"	40	49.2	38	120	100	203.5
2"	50	61.2	50	140	108	203.5
2 1/2"	65	77	65	185	150	251.5
3"	80	89.9	80	205	161	251.5
4"	100	115	100	240	180	291.5

HE-3501 T

3-PC PN63 Threaded End Ball Valve



Sizes range	1/4"~ 4" (DN08 ~ DN100)
Port availability	Full port
Nominal pressure	PN63
Temp. rating	-10°C~180°C
Body material	EN10213, 1.4408
Trim material	SS ball & stem
End connection	Threaded end
Seat material	PTFE
Anti-static	Anti-static (option)
Note	Handle locking (option) ISO5211 Direct mounting pad

MATERIAL LIST

No.	PART NAME	SPECIFICATION
1	BODY	1.4408
2	END CAP	1.4408
3	BALL	A351 CF8M
4	WASHER	1.4301
5	NUT	1.4301
6	BOLT	1.4301
7	BALL SEAT	PTFE
8	BODY SEAL	PTFE
9	THRUST WASHER	PTFE
10	STEM PACKING	PTFE
11	STEM	A276 316
12	GLAND	1.4301
13	WASHER	1.4301
14	NUT	1.4301
15	LOCKING(option)	1.4301
16	HANDLE	1.4301
17	COVER	PLASTIC

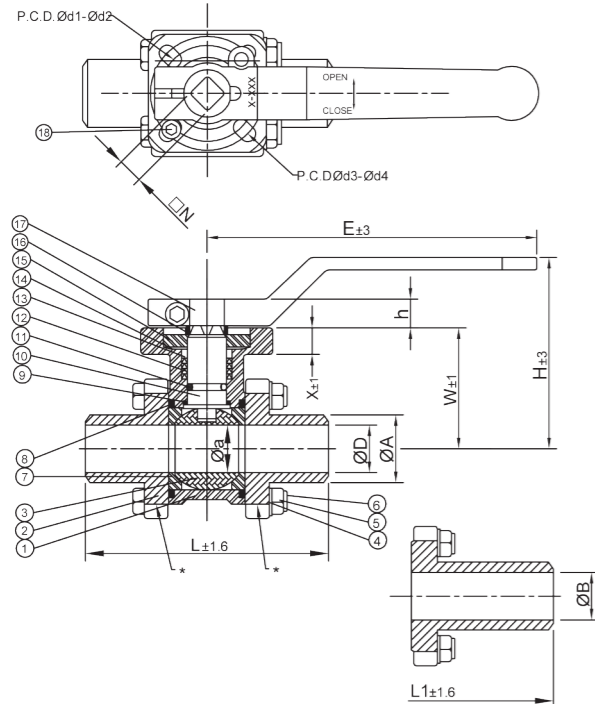
DIMENSIONS

UNIT : mm

SIZE		øP	L	H	E
NPS	DN				
1/4"	8	10.6	60	55	97.5
3/8"	10	11.8	60	55	97.5
1/2"	15	16	75	64	125.5
3/4"	20	20	80	67	125.5
1"	25	25	90	83	143.5
1 1/4"	32	32	110	89	143.5
1 1/2"	40	38	120	100	203.5
2"	50	51	140	108	203.5
2 1/2"	65	65	185	150	251.5
3"	80	80	205	161	251.5
4"	100	100	240	180	291.5

HE-3521 B

3-PC PN63 Long BW / Short BW End, Direct Mount Ball Valve



Sizes range	¼"~ 4" (DN08 ~ DN100)
Port availability	Full port
Nominal pressure	PN63
Temp. rating	-10°C~180°C
Body material	EN10213, 1.4408
Trim material	SS ball & stem
End connection	Long/short BW end
Seat material	PTFE-FDA
Anti-static	Anti-static (option)
Note	Handle locking (option) ISO5211 Direct mounting pad

MATERIAL LIST

No.	PART NAME	SPECIFICATION
1	BODY	1.4408
2	END CAP	1.4408
3	BALL	A351 CF8M
4	WASHER	SS304
5	NUT	SS304
6	BOLT	SS304
7	SEAT	PTFE-FDA
8	BODY SEAL	PTFE-FDA
9	THRUST WASHER	PTFE-FDA
10	STEM PACKING	A276 316VITON
11	O-RING	VITON
12	STEM SEAL	PTFE-FDA
13	GLAND RING	SS304
14	BEVEL WASHER	SUS301
15	GLAND CAP	SS304
16	SPACER RING (option)	PTFE-FDA
17	HANDLE (option)	SS304
18	STOPPER (option)	SS304

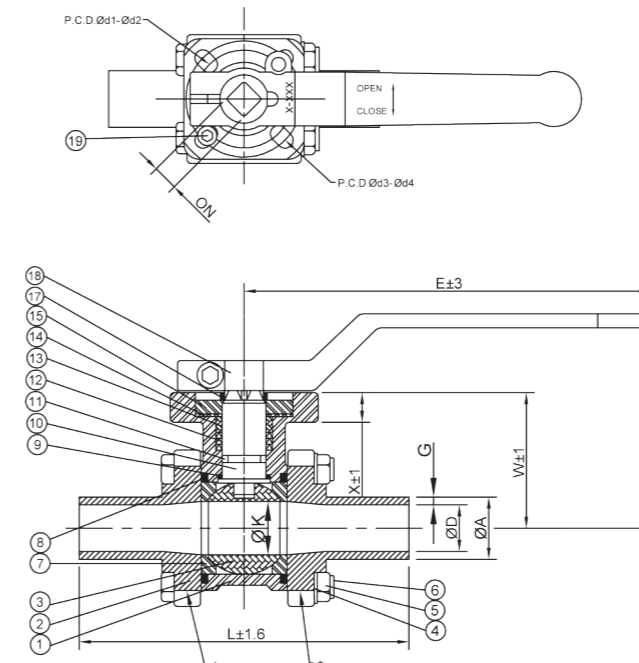
DIMENSIONS

UNIT : mm

SIZE		øa	øD	L	L1	øB	W	E	H	X	□N	øA	h	ød1	ød2	ød3	ød4	ISO 5211
NPS	DN																	
¼"	8	16	11	65	--	--	41	124	64	9	9	18	9	36	6	42	6	F03, F04
⅜"	10	16	12	70	94	12.5	41	124	64	9	9	20	9	36	6	42	6	F03, F04
½"	15	16	16	75	99	16	41	124	64	9	9	23	9	36	6	42	6	F03, F04
¾"	20	20	20	90	96	20	44	124	68	9	9	28	9	36	6	42	6	F03, F04
1"	25	25	25	100	103	25	53	187	91	10	11	34	12	42	6	50	7	F04, F05
1¼"	32	32	32	110	102	32	58	187	97	10	11	41	12	42	6	50	7	F04, F05
1½"	40	38.1	38	125	102	40	69	222	107	13	14	49	15	50	7	70	9	F05, F07
2"	50	50.8	50	150	101	50	77	222	116.5	13	14	62	15	50	7	70	9	F05, F07
2½"	65	65	65	190	124	65	98	302	154.5	13	17	78	18	70	9	102	11	F07, F10
3"	80	80	80	220	125	80	110	302	166.5	13	17	93	18	70	9	102	11	F07, F10
4"	100	100	100	270	115	100	137	350	219.5	15	22	125	24	--	--	102	11	F10

HE-3521 P

3-PC PN63 ASME / DIN / ISO Tube Welding END, Direct Mount Ball Valve



Sizes range	¼"~ 4" (DN08 ~ DN100)
Port availability	Full port
Nominal pressure	PN63
Temp. rating	-10°C~180°C
Body material	1.4435
Trim material	Fe<1.0%
End connection	ASME / DIN / ISO BE end
Seat material	PTFE-FDA
Anti-static	Anti-static (option)
Note	Handle locking (option) ISO5211 Direct mounting pad Elcarolysis polished

MATERIAL LIST

No.	PART NAME	SPECIFICATION
1	BODY	1.4435 delta Fe < 1%
2	END CAP	1.4435 delta Fe < 1%
3	BALL	≤ ½" 316L > ½" 1.4435 delta Fe < 1%
4	WASHER	SS316
5	NUT	SS316
6	BOLT	SS316
7	SEAT	PTFE-FDA + 50%SS
8	BODY SEAL	PTFE-FDA
9	THRUST WASHER	PTFE-FDA
10	STEM PACKING	SS316L
11	O-RING	SILICONE
12	STEM SEAL	PTFE-FDA
13	GLAND	SS316
14	BEVEL WASHER	SUS301
15	GLAND CAP	SS316
16	END PVC PLUGS	PVC
17	SPACER RING (option)	PTFE-FDA
18	HANDLE (option)	SS316 + electro polished
19	STOPPER (option)	SS316

DIMENSIONS

UNIT : mm

SIZE		L	W	øK	E	H	X	ON	G	A	ød1	ød2	ød3	ød4	ISO 5211
NPS	DN														
¼"	8	100	41	10.3	124	64	9	9	1.6	13.5	36	6	42	6	F03, F04
⅜"	10	100	41	14	124	64	9	9	1.6	17.2	36	6	42	6	F03, F04
½"	15	100	41	16	124	64	9	9	1.6	21.3	36	6	42	6	F03, F04
¾"	20	105	44	20	124	68	9	9	1.6	26.9	36	6	42	6	F03, F04
1"	25	115	53	25	187	91	10	11	2.0	33.7	42	6	50	7	F04, F05
1¼"	32	140	58	32	187	97	10	11	2.0	42.4	42	6	50	7	F04, F05
1½"	40	150	69	38.1	222	107	13	14	2.0	48.3	50	7	70	9	F05, F07
2"	50	170	77	50.8	222	116.5	13	14	2.0	60.3	50	7	70	9	F05, F07
2½"	65	220	98	65	302	154.5	13	17	2.0	76.1	70	9	102	11	F07, F10
3"	80	300	110	80	302	166.5	13	17	2.3	88.9	70	9	102	11	F07, F10
4"	100	325	137	100	350	219.5	16	22	2.3	114.3	--	--	102	11	F10

HE-3521 T

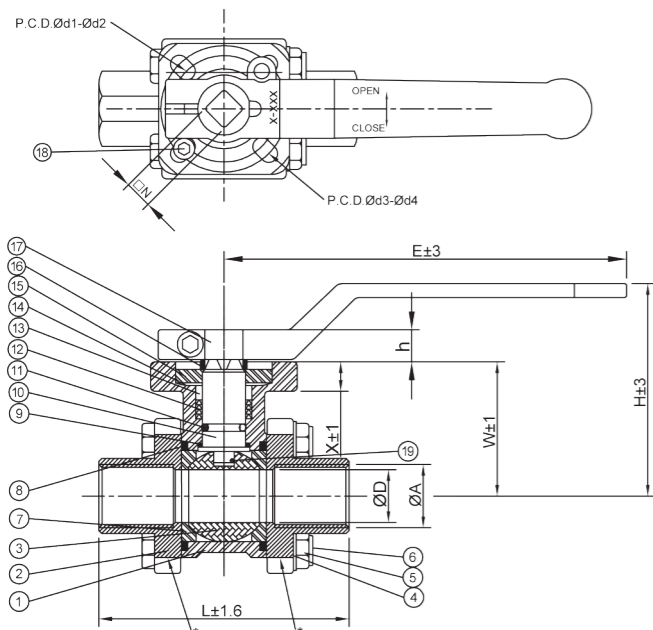
3-PC PN63 Threaded End, Direct Mount Ball Valve



Sizes range	1/4"~ 4" (DN08 ~ DN100)
Port availability	Full port
Nominal pressure	PN63
Temp. rating	-10°C~180°C
Body material	EN10213, 1.4408
Trim material	SS ball & stem
End connection	Threaded end
Seat material	PTFE
Anti-static	Anti-static (option)
Note	Handle locking (option) ISO5211 Direct mounting pad

MATERIAL LIST

No.	PART NAME	SPECIFICATION
1	BODY	1.4408
2	END CAP	1.4408
3	BALL	A351 CF8M
4	WASHER	SS304
5	NUT	SS304
6	BOLT	SS304
7	SEAT	PTFE
8	BODY SEAL	PTFE
9	THRUST WASHER	PTFE
10	STEM	A276 316
11	O-RING	VITON
12	STEM SEAL	PTFE
13	GLAND RING	SS304
14	BEVEL WASHER	SUS301
15	GLAND NUT	SS304
16	SPACER RING	PTFE
17	HANDLE	SS304
18	STOPPER	SS304
19	Anti-static ball	SS316



DIMENSIONS

UNIT : mm

SIZE		øD	L	W	E	H	X	□N	h	ød1	ød2	ød3	ød4	ISO 5211
NPS	DN													
1/4"	8	10.5	65	41	124	64	9	9	9	36	6	42	6	F03, F04
3/8"	10	11.8	65	41	124	64	9	9	9	36	6	42	6	F03, F04
1/2"	15	16	75	41	124	64	9	9	9	36	6	42	6	F03, F04
3/4"	20	20	80	44	124	69	9	9	9	36	6	42	6	F03, F04
1"	25	25	90	53	187	91	10	11	12	42	6	50	7	F04, F05
1 1/4"	32	32	110	58	187	97	10	11	12	42	6	50	7	F04, F05
1 1/2"	40	40	120	69	222	107	13	14	15.5	50	7	70	9	F05, F07
2"	50	50	140	77	222	116.5	13	14	15.5	50	7	70	9	F05, F07
2 1/2"	65	65	185	98	302	154.5	13	17	18.5	70	9	102	11	F07, F10
3"	80	80	205	110	302	166.5	13	17	18.5	70	9	102	11	F07, F10
4"	100	100	240	137	305	219.5	15	22	24	--	--	102	11	F10

HE-611

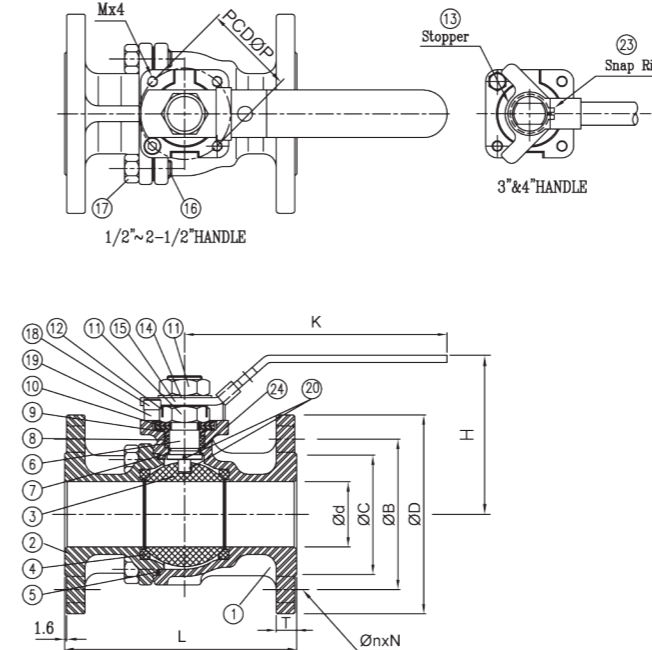
2-PC CL150 Flange End Mounting Pad Ball Valve



Sizes range	NPS 1/2"~ 4" (DN15 ~ DN100)
Port availability	Full port
Nominal pressure	ASME Class 150
Temp. rating	-10°C~180°C
Body material	ASTM A351, CF8M
Trim material	SS ball & stem
End connection	ASME B16.5 Flange ASME B16.10 F-T-F
Seat material	PTFE
Anti-static	Anti-static
Note	Handle locking (option) ISO5211 mounting pad

MATERIAL LIST

No.	PART NAME	SPECIFICATION
1	BODY	EN-10213-4, 1.4408
2	CAP	EN-10213-4, 1.4408
3	BALL	ASTM A351 GR.CF8M
4	SEAT	RPTFE
5	GASKET	PTFE
6	STEM	SS316
7	THRUST WASHER	POLYFILL TEELON
8	PACKING	PTFE
9	RING	SS304
10	BEVEL WASHER	SS301
11	HEX. NUT	SS304
12	LOCK	SS304
13	STOPPER	SS304
14	HANDLE WASHER	SS304
15	HANDLE	SS304
16	BOLT	SS304
17	HEX. NUT	SS304
18	BOLT	SS304
19	WASHER	SS304
20	STATIC DEVICE	SS304
21	HANDLE PIPE	SS304
22	BOLT	SS304
23	SNAP RING	SS304
24	O-RING	VITON



DIMENSIONS

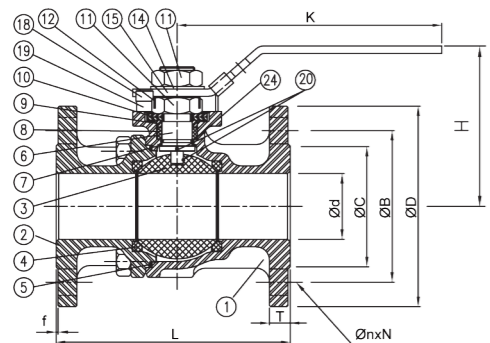
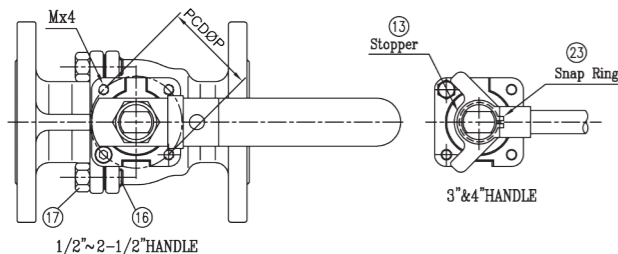
UNIT : mm

SIZE		ød	øB	øC	øD	H	K	L	T	øn	N	M	øP
NPS	DN												
1/2"	15	15	60.5	35.1	88.9	72	145	108	11.2	15.9	4	M5	42
3/4"	20	20	69.9	42.9	98.6	74	145	117	11.2	15.9	4	M5	42
1"	25	25	79.2	50.8	108	81	178	127	11.2	15.9	4	M6	50
1 1/4"	32	32	88.9	63.5	117.5	87	178	140	12.7	15.9	4	M6	50
1 1/2"	40	40	98.6	73.2	127	126	255	165	14.3	15.9	4	M8	70
2"	50	50	120.7	91.9	152.4	136	255	178	15.8	19.1	4	M8	70
2 1/2"	65	65	139.7	104.6	177.8	155	255	190.5	17.6	19.1	4	M8	70
3"	80	80	152.4	127	190.5	167	350	203	19.1	19.1	4	M10	102
4"	100	100	190.5	157.5	228.6	179	400	228.6	23.9	19.1	8	M10	102



HE-612

2-PC PN16 / PN40 Flange End Mounting Pad Ball Valve



Sizes range	NPS ½"~ 4" (DN15 ~ DN100)
Port availability	Full port
Nominal pressure	DN15~DN50:PN40 DN65~DN100:PN16
Temp. rating	-10°C~180°C
Body material	EN10213, 1.4408
Trim material	SS ball & stem
End connection	EN1092-1 DIN3202 F1 / F4
Seat material	PTFE
Anti-static	Anti-static
Note	Handle locking (option) ISO5211 mounting pad

MATERIAL LIST

No.	PART NAME	SPECIFICATION
1	BODY	EN10213-4, 1.4408
2	CAP	EN10213-4, 1.4408
3	BALL	ASTM A351 GR.CF8M
4	SEAT	RPTFE
5	GASKET	PTFE
6	STEM	SS316
7	THRUST WASHER	POLYFILL TEELON
8	PACKING	PTFE
9	RING	SS304
10	BEVEL WASHER	SS301
11	HEX. NUT	SS304
12	LOCK	SS304
13	STOPPER	SS304
14	HANDLE WASHER	SS304
15	HANDLE	SS304
16	BOLT	SS304
17	HEX. NUT	SS304
18	BOLT	SS304
19	WASHER	SS304
20	STATIC DEVICE	SS304
21	HANDLE PIPE	SS304
22	BOLT	SS304
23	SNAP RING	SS304
24	O-RING	VITON

DIMENSIONS

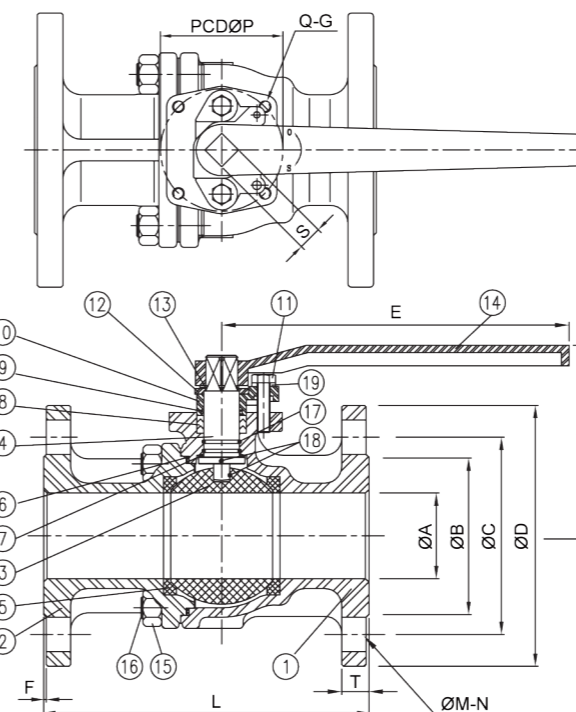
UNIT : mm

SIZE		ød	B	øC	øD	H	K	L		T	f	øn	N	M	øP
NPS	DN							F1	F2						
½"	15	15	65	45	95	72	145	130	115	16	2	14	4	M5	42
¾"	20	20	75	58	105	74	145	150	120	18	2	14	4	M5	42
1"	25	25	85	68	115	81	178	160	125	18	2	14	4	M6	50
1¼"	32	32	100	78	140	87	178	180	130	18	2	18	4	M6	50
1½"	40	38	110	88	150	126	255	200	140	18	3	18	4	M8	70
2"	50	50	125	102	165	136	255	230	150	20	3	18	4	M8	70
2½"	65	65	145	122	185	155	255	290	170	18	3	18	4	M8	70
3"	80	80	160	138	200	167	350	310	180	20	3	18	8	M10	102
4"	100	100	180	158	220	179	400	350	190	20	3	18	8	M10	102



HE-613

2-PC JIS10K Flange End Ball Valve



Sizes range	NPS ½"~ 4" (DN15 ~ DN100)
Port availability	Full port
Nominal pressure	JIS 10K
Temp. rating	-10°C~180°C
Body material	SCS14A
Trim material	SS ball & stem
End connection	JIS B2212 JIS B2002 F-T-F
Seat material	PTFE
Anti-static	Anti-static
Note	With Handle locking

MATERIAL LIST

No.	PART NAME	SPECIFICATION
1	BODY	SCS13, SCS14, SCS16
2	CAP	SCS13, SCS14, SCS16
3	BALL	SCS13, SCS14, SCS16
4	SEAT	PTFE
5	GASKET	PTFE
6	STEM	SS304, SS316, SS316L
7	THRUST WASHER	PTFE
8	PACKING	PTFE
9	STEM PACKING	PTFE
10	GLAND	SCS13
11	SNAP RING	SS304
12	LOCK	SS304
13	HANDLE	FCD40
14	BOLTS	SS304
15	BOLT WASHER	SS304
16	BOLTS	SS304
17	STATIC DEVICE	SS304
18	WASHER	SS304

DIMENSIONS

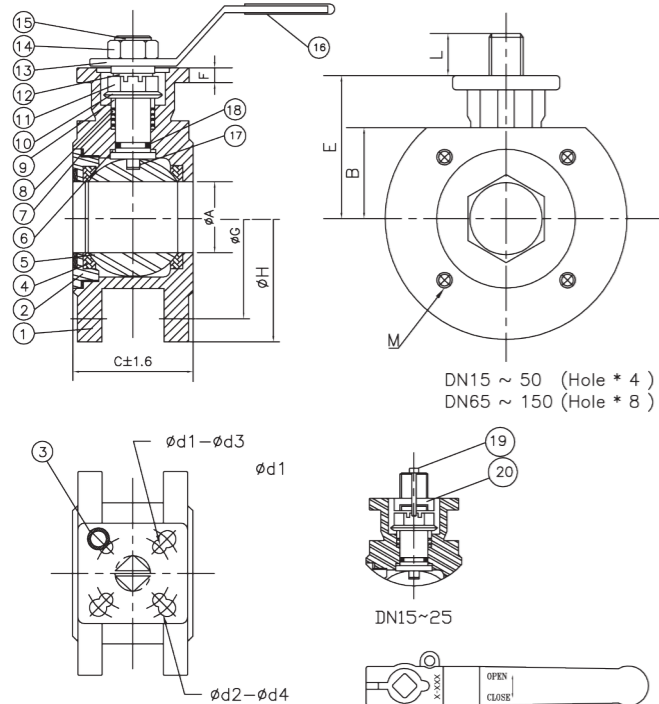
UNIT : mm

SIZE		ød	øB	øC	øD	K	L	T	f	øn	N	H	M	øP	S
NPS	DN														
½"	15	15	51	70	95	145	108	12	1	15	4	66	M5	42	9
¾"	20	20	56	75	100	145	117	14	1	15	4	69	M5	42	9
1"	25	25	67	90	125	165	127	14	1	19	4	89	M6	50	11
1¼"	32	32	76	100	135	165	140	16	2	19	4	94	M6	50	11
1½"	40	38	81	105	140	230	165	16	2	19	4	107	M8	70	17
2"	50	50	96	120	155	230	178	16	2	19	4	122	M8	70	17
2½"	65	65	116	140	175	230	186	18	2	19	4	138.7	M8	70	17
3"	80	80	126	150	185	320	203	18	2	19	8	158	M10	102	22
4"	100	100	151	175	210	320	228	18	2	19	8	175	M10	102	22



HE-140

1-PC PN16 / 40 Direct Mount / Flange Connection Ball Valve



Sizes range	NPS ½"~ 6" (DN15 ~ DN150)
Port availability	Full port
Nominal pressure	DN15~DN50:PN40 DN65~DN150:PN16
Temp. rating	-10°C~200°C
Body material	EN10213, 1.4408
Trim material	SS ball & stem
End connection	DIN2633
Seat material	PTFE
Anti-static	Anti-static
Note	Handle locking ISO5211 Direct mounting pad

MATERIAL LIST

No.	PART NAME	SPECIFICATION
1	BODY	1.4408
2	END CAP	1.4408
3	STOPPER	SS304
4	SEAT	PTFE-FDA
5	BALL	SS316
6	THRUST WASHER	PTFE
7	BODY SEAL	PTFE
8	STEM PACKING	PTFE / C-PTFE
9	GLAND	SS304
10	BEVEL WASHER	SS301
11	NUT	SS304
12	RETAINER	SS304
13	HANDLE	SS304
14	NUT	SS304
15	STEM	SS316
16	PLASTIC COVER	PVC
17	ANTI-STATIC DEVICE	SS316
18	O-RING	VITON
19	SCREW	SS304
20	ADAPTOR	SUS303

DIMENSIONS

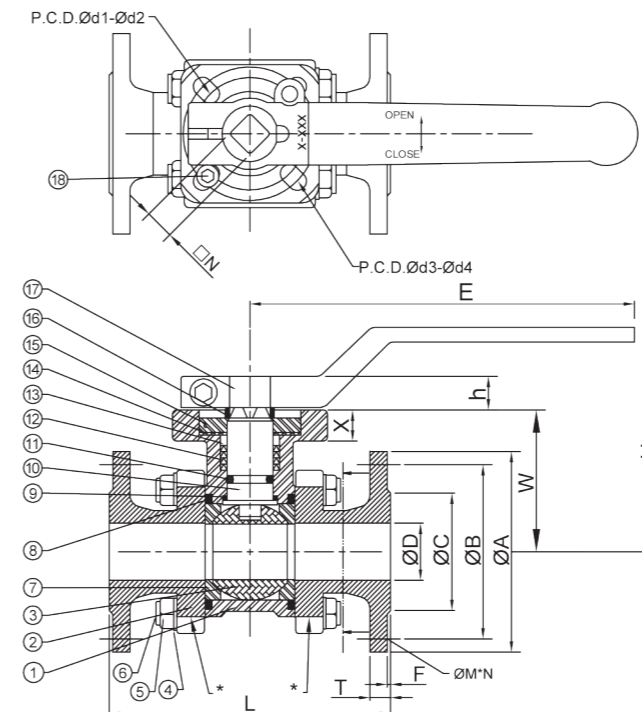
UNIT : mm

SIZE		A	B	C	E	F	G	H	L	ød1	ød2	ød3	ød4	M	ISO 5211
NPS	DN														
½"	15	15	34.5	40	60	6.3	65	95	8	36	42	5.5	6.0	M12	F03, F04
¾"	20	20	38.5	44	64.3	7.0	75	105	11	36	42	5.5	6.0	M12	F03, F04
1"	25	25	44.6	53	64.6	7.0	85	115	11	42	50	6.0	7.2	M12	F04, F05
1¼"	32	32	51	58	70.2	7.0	100	135	11	42	50	6.0	7.2	M16	F04, F05
1½"	40	38	55	62	76.3	7.2	110	145	17	50	70	7.2	9.2	M16	F05, F07
2"	50	50	63	78	85.5	7.2	125	155	15	50	70	7.2	9.2	M16	F05, F07
2½"	65	65	73.5	100	105	10.5	145	185	15	--	70	--	9.2	M16	F07
3"	80	76	94	120	123	10.5	160	200	17.5	--	70	--	9.2	M16	F07
4"	100	96	105	152	132	10.5	180	220	14.5	70	102	9.2	11.2	M16	F07, F10
5"	125	114	101.5	179	157.5	10.5	212	253	14.3	102	125	11.2	13.2	M16	F10, F12
6"	150	135	--	212	172.5	15	240	288	35.1	102	125	11.2	13.2	M20	F10, F12



HE-3521 F

3-PC PN40 Flange End, Direct Mount Ball Valve



Sizes range	½"~ 4" (DN15 ~ DN100)
Port availability	Full port
Nominal pressure	PN40
Temp. rating	-10°C~180°C
Body material	EN10213, 1.4408
Trim material	SS ball & stem
End connection	Flange end
Seat material	PTFE-FDN
Anti-static	Anti-static (option)
Note	Handle locking (option) ISO5211 Direct mounting pad

MATERIAL LIST

No.	PART NAME	SPECIFICATION
1	BODY	1.4408
2	END CAP	1.4408
3	BALL	A351 CF8M
4	WASHER	SS304
5	NUT	SS304
6	BOLT	SS304
7	SEAT	PTFE-FDA
8	BODY SEAL	PTFE-FDA
9	THRUST WASHER	PTFE-FDA
10	STEM PACKING	A276 316
11	O-RING	VITON
12	STEM SEAL	PTFE-FDA
13	GLAND RING	SS304
14	BENEL WASHER	SUS301
15	GLAND CAP	SS304
16	SPACER RING (option)	PTFE-FDA
17	HANDLE (option)	SS304
18	STOPPER (option)	SS304

DIMENSIONS

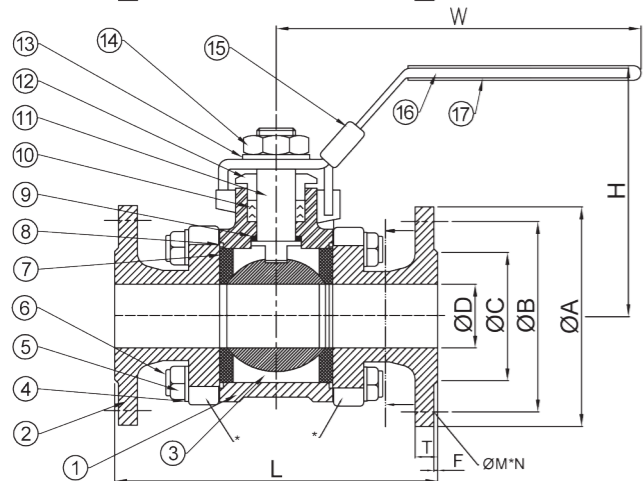
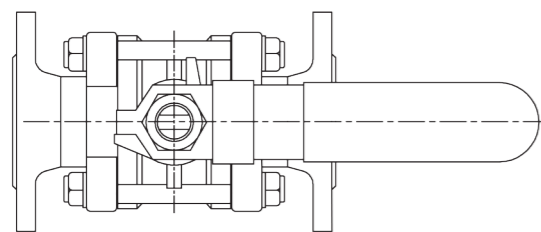
UNIT : mm

SIZE		øD	øA	øB	øC	T	F	L	W	E	H	X	□N	h	øM*N	ød1	ød2	ød3	ød4	ISO 5211	
NPS	DN																				
½"	15	16	95	65	45	16	2	130	41	124	64	9	9	9	ø14*4	36	6	42	6	F03, F04	
¾"	20	20	105	75	58	18	2	150	44	124	68	9	9	9	ø14*4	36	6	42	6	F03, F04	
1"	25	25	115	85	68	18	2	160	53	187	91	10	11	12	ø14*4	42	6	50	7	F04, F05	
1¼"	32	32	140	100	78	18	2	180	58	187	97	10	11	12	ø18*4	42	6	50	7	F04, F05	
1½"	40	38	150	110	88	18	3	200	69	222	107	13	14	15	ø18*4	50	7	70	9	F05, F07	
2"	50	50	165	125	102	20	3	230	77	222	116.5	13	14	15	ø18*4	50	7	70	9	F05, F07	
2½"	65	65	185	145	122	22	3	290	98	302	154.5	13	17	18	ø18*8	70	9	102	11	F07, F10	
3"	80	80	200	160	138	24	3	310	110	302	166.5	13	17	18	ø18*8	70	9	102	11	F07, F10	
4"	100	100	235	190	162	24	3	350	137	350	219.5	16	22	24	ø22*8	--	--	102	11	F10	



HE-3540 F

3-PC PN40 Flange End Ball Valve



Sizes range	½"~ 4" (DN15 ~ DN100)
Port availability	Full port
Nominal pressure	PN40
Temp. rating	-10°C~180°C
Body material	EN10213, 1.4408
Trim material	SS ball & stem
End connection	Flange end
Seat material	PTFE- FDA
Note	Handle locking (option)

MATERIAL LIST

No.	PART NAME	SPECIFICATION
1	BODY	1.4408
2	END CAP	1.4408
3	BALL	A351 CF8M
4	WASHER	1.4301
5	NUT	1.4301
6	BOLT	1.4301
7	BALL SEAT	PTFE-FDA
8	BODY SEAL	PTFE-FDA
9	THRUST WASHER	PTFE-FDA
10	STEM PACKING	PTFE-FDA
11	STEM	A276 316
12	GLAND	1.4301
13	WASH	1.4301
14	NUT	1.4301
15	LOCKING	1.4301
16	HANDLE	1.4301
17	COVER	PLASTIC

DIMENSIONS

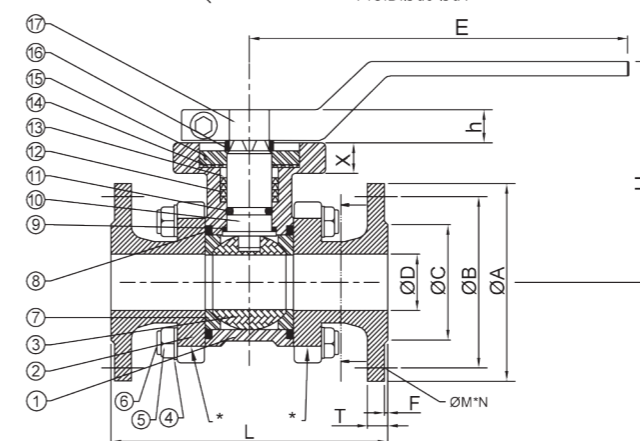
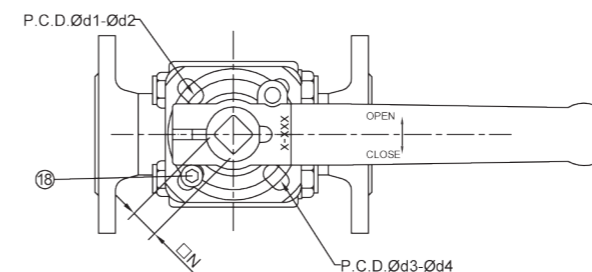
UNIT : mm

SIZE		øD	øA	øB	øC	T	F	L	W	H	øM*N
NPS	DN										
½"	15	16	95	65	45	16	2	130	125	64	ø 14*4
¾"	20	20	105	75	58	18	2	150	125	67	ø 14*4
1"	25	25	115	85	68	18	2	160	140	83	ø 14*4
1¼"	32	32	140	100	78	18	2	180	140	89	ø 18*4
1½"	40	38	150	110	88	18	3	200	200	100	ø 18*4
2"	50	50	165	125	102	20	3	230	200	108	ø 18*4
2½"	65	65	185	145	122	22	3	290	250	150	ø 18*8
3"	80	80	200	160	138	24	3	310	250	161	ø 18*8
4"	100	100	235	190	162	24	3	350	290	180	ø 22*8



HE-3563 F

3-PC PN63 Flange End, Direct Mount Ball Valve



Sizes range	½"~ 4" (DN15 ~ DN100)
Port availability	Full port
Nominal pressure	PN63
Temp. rating	-10°C~180°C
Body material	EN10213, 1.4408
Trim material	SS ball & stem
End connection	Flange end
Seat material	PTFE- FDA
Note	Handle locking (option) ISO5211 Direct mounting pad

MATERIAL LIST

No.	PART NAME	SPECIFICATION
1	BODY	1.4408
2	END CAP	1.4408
3	BALL	A351 CF8M
4	WASHER	SS304
5	NUT	SS304
6	BOLT	SS304
7	SEAT	PTFE-FDA
8	BODY SEAL	PTFE-FDA
9	THRUST WASHER	PTFE-FDA
10	STEM	A276 316
11	O-RING	VITON
12	STEM SEAL	PTFE-FDA
13	GLAND RING	SS304
14	BENEL WASHER	SUS301
15	GLAND CAP	SS304
16	SPACER RING (option)	PTFE-FDA
17	HANDLE (option)	SS304
18	STOPPER (option)	SS304

DIMENSIONS

UNIT : mm

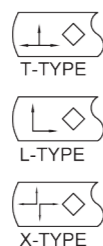
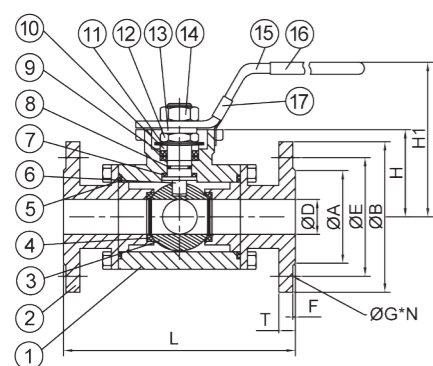
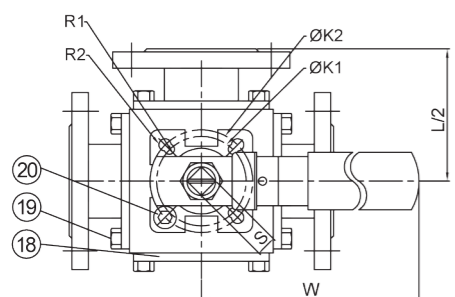
SIZE		øD	øA	øB	øC	T	F	L	W	E	H	X	□N	h	øM*N	ød1	ød2	ød3	ød4	ISO 5211
NPS	DN																			
½"	15	16	105	75	45	20	2	130	41	124	64	9	9	9	ø 14*4	36	6	42	6	F03, F04
¾"	20	20	130	90	58	22	2	150	44	124	68	9	9	9	ø 18*4	36	6	42	6	F03, F04
1"	25	25	140	100	68	24	2	160	53	187	91	10	11	12	ø 18*4	42	6	50	7	F04, F05
1¼"	32	32	155	110	78	26	2	180	58	187	97	10	11	12	ø 22*4	42	6	50	7	F04, F05
1½"	40	38	170	125	88	28	3	200	69	222	107	13	14	15	ø 22*4	50	7	70	9	F05, F07
2"	50	50	180	135	102	26	3	230	77	222	116.5	13	14	15	ø 22*4	50	7	70	9	F05, F07
2½"	65	65	205	160	122	26	3	290	98	302	154.5	13	17	18	ø 22*8	70	9	102	11	F07, F10
3"	80	80	215	170	138	28	3	310	110	302	166.5	13	17	18	ø 22*8	70	9	102	11	F07, F10
4"	100	100	250	200	162	30	3	350	137	350	219.5	16	22	24	ø 26*8	--	--	102	11	F10



HE-3016 F

DN15 ~ DN50

3-Ways PN16 / PN40 Flange End,
Direct Mount Ball Valve



Sizes range	½"~ 2" (DN15 ~ DN50)
Port availability	Full port
Nominal pressure	PN16
Temp. rating	-10°C~180°C
Body material	EN10213, 1.4408
Trim material	SS ball & stem
End connection	Flange end
Seat material	PTFE
Note	T / L / X Type ISO5211 Direct mounting pad

MATERIAL LIST

No.	PART NAME	SPECIFICATION
1	BODY	ASTM A351 CF8M
2	END CAP	ASTM A351 CF8M
3	BALL	ASTM A351 CF8M / 316
4	SEAT	PTFE
5	BODY SEAL	PTFE
6	SEAT	ASTM A276 316
7	THRUST WASHER	PTFE
8	STEM O-RING	VITON
9	STEM PACKING	PTFE
10	GLAND RING	AISI 304
11	BENEL WASHER	AISI 304
12	GLAND NUT	AISI 304
13	SPRING WASHER	AISI 304
14	HANDLE NUT	AISI 304
15	HANDLE	AISI 304
16	SLEEVE	VINYL PLASTISOL
17	LOCKING DEVICE	AISI 304
18	BLANK END	ASTM A351 CF8M
19	BODY BLOT	AISI 304
20	STOPPER	AISI 304

DIMENSIONS

UNIT : mm

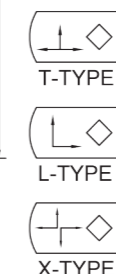
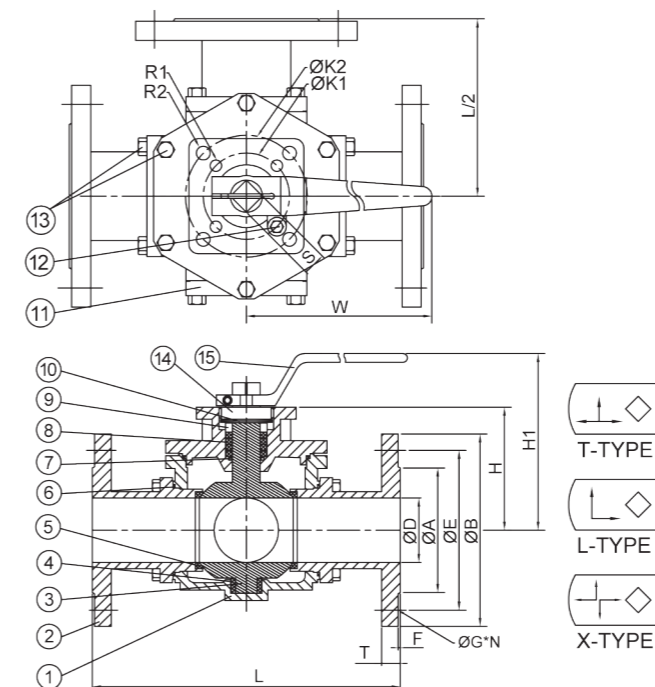
SIZE		øD	L	H	H1	øA	øB	øE	øG	N	T	F	W	S	øK1	øK2	R1	R2
NPS	DN																	
½"	15	15	160	42.2	68	45	95	65	14	4	14	2	132	9	36	42	3	3
¾"	20	20	178	48.4	75	58	105	75	14	4	16	2	132	11	42	50	3	3.5
1"	25	25	191	55.3	110	66	115	85	14	4	16	2	160	11	42	50	3	3.5
1¼"	32	32	208	63	118	76	140	100	18	4	16	2	160	14	50	70	3.5	4.5
1½"	40	38	233	73.3	126	86	150	110	18	4	16	3	205	14	50	70	3.5	4.5
2"	50	50	274	92.2	135.5	100	165	125	18	4	18	3	205	17	70	102	4.5	5.5



HE-3016 F

DN65 ~ DN100

3-Ways PN16 / PN40 Flange End,
Direct Mount Ball Valve



Sizes range	2½"~ 4" (DN65 ~ DN100)
Port availability	Full port
Nominal pressure	PN16
Temp. rating	-10°C~180°C
Body material	EN10213, 1.4408
Trim material	SS ball & stem
End connection	Flange end
Seat material	PTFE
Note	T / L / X Type ISO5211 Direct mounting pad

MATERIAL LIST

No.	PART NAME	SPECIFICATION
1	BODY	ASTM A351 CF8M
2	END CAP	ASTM A351 CF8M
3	STEM BALL	ASTM A351 CF8M / 316
4	BUSHING	PTFE
5	SEAT	PTFE
6	BODY SEAL	PTFE
7	STEM O-RING	VITON
8	STEM PACKING	PTFE
9	GLAND RING	AISI 304
10	BENEL WASHER	AISI 304
11	BLANK END	ASTM A351 CF8M
12	STOPPER	AISI 304
13	BODY BLOT	AISI 304
14	GLAND	AISI 304
15	HANDLE	AISI 304

DIMENSIONS

UNIT : mm

SIZE		øD	L	H	H1	øA	øB	øE	øG	N	T	F	W	S	øK1	øK2	R1	R2
NPS	DN																	
2½"	15	62	296	118	200	120	185	145	18	4	18	3	317	22	70	102	4.5	5.5
3"	20	76	305	136	218	136	200	160	18	8	20	3	317	22	102	125	5.5	6.5
4"	25	95	368	157	238	158	220	180	18	8	20	3	317	22	102	125	5.5	6.5

HE-3021 T

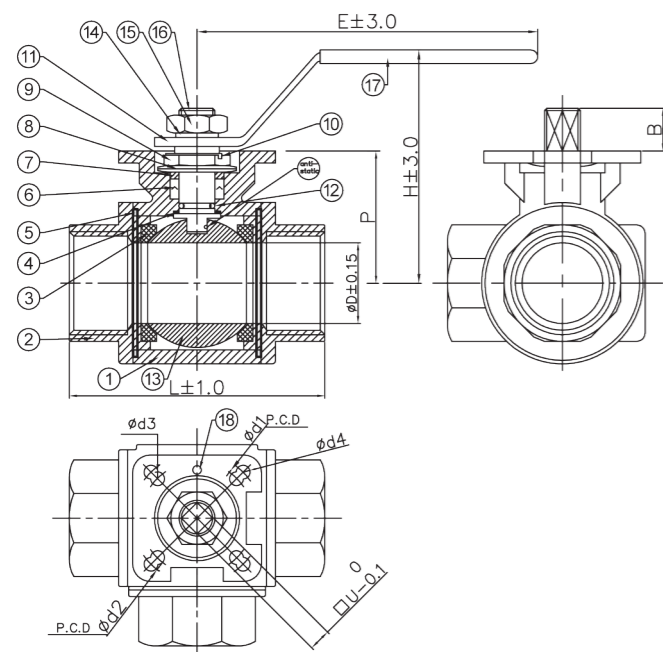
3-Ways PN16 / PN40 Threaded End,
Direct Mount Ball Valve



Sizes range	1/4"~ 2 1/2" (DN08 ~ DN65)
Port availability	Reduce port
Nominal pressure	PN63
Temp. rating	-10°C~180°C
Body material	EN10213, 1.4408
Trim material	SS ball & stem
End connection	Threaded end
Seat material	PTFE
Note	T / L Type ISO5211 Direct mounting pad

MATERIAL LIST

No.	PART NAME	SPECIFICATION
1	BODY	1.4408
2	END CAP	1.4408
3	BALL SEAT	PTFE
4	THRUST WASHER	PTFE
5	BODY SEAL	PTFE
6	STET PACKING	PTFE
7	GLAND	SS304
8	DISC SPRING	SS301
9	NUT	SS304
10	SECURING RING	SS304
11	HANDLE (option)	SS304
12	O-RING	VITON
13	BALL	CF8M
14	SPACER RING	SS304
15	NUT	SS304
16	STEM	A276 316
17	COVER (option)	PLASTIC
18	STOPPER DRILLING (option)	



DIMENSIONS

UNIT : mm

SIZE		øD	E	L	H	B	P	□U	ød1	ød3	ød2	ød4	ISO 5211
NPS	DN												
1/4"	8	11.5	119	80	50	9	35.5	9	36	5.5	42	5.5	F03, F04
3/8"	10	12.7	119	80	50	9	35.5	9	36	5.5	42	5.5	F03, F04
1/2"	15	12.7	119	80	53	9	35.5	9	36	5.5	42	5.5	F03, F04
3/4"	20	15	150.5	88	64	11	40.5	11	42	5.5	50	6.5	F04, F05
1"	25	20	150.5	99	66	11.5	44.5	11	42	5.5	50	6.5	F04, F05
1 1/4"	32	25.4	150.5	122	79	11	51	11	42	5.5	50	6.5	F04, F05
1 1/2"	40	32	150.5	141	83	11	56	11	42	5.5	50	6.5	F04, F05
2"	50	38	188.5	170	94	15.5	66	14	50	6.5	70	8.5	F05, F07
2 1/2"	65	50	188.5	170	106	17	80	14	--	--	70	8.5	F07

HE-3028 TB

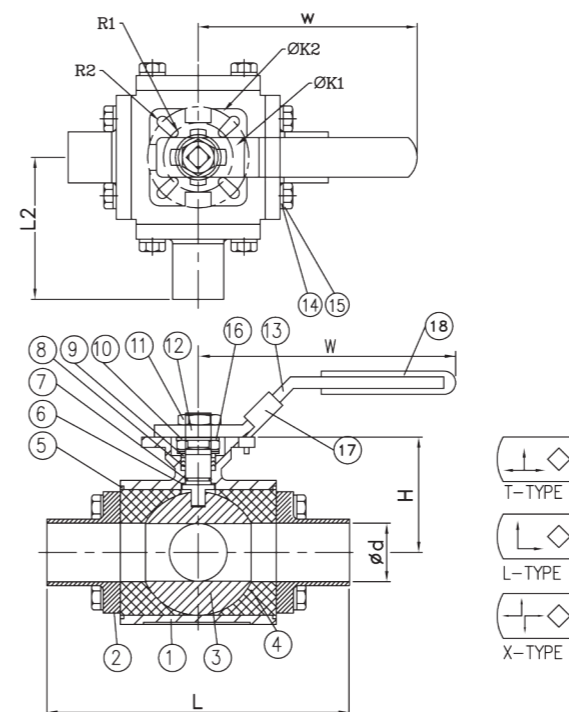
3-Ways 1000WOG
Direct Mounting Pad Ball Valve



Sizes range	1/2"~ 4" (DN15 ~ DN50)
Port availability	Full port
Nominal pressure	1000WOG
Temp. rating	-10°C~180°C
Body material	EN10213, 1.4408
Trim material	SS ball & stem
End connection	Tube welding end
Seat material	PTFE
Note	T / L / X Type ISO5211 Direct mounting pad

MATERIAL LIST

No.	PART NAME	SPECIFICATION
1	BODY	ASTM A351 CF8M / CF3M
2	END CAP	ASTM A351 CF8M / CF3M
3	BALL	ASTM A351 CF8M / CF3M
4	SEAT	PTFE / TFM-1600
5	GASKET	PTFE / TFM-1600
6	THRUST WASHER	PTFE / TFM-1600
7	O-RING	VITON
8	STEM PACKING	PTFE / TFM-1600
9	GLAND RING	AISI 304
10	BENEL WASHER	AISI 304
11	GLAND NUT	AISI 304
12	STEM	AISI 316 / 316L
13	HANDLE	AISI 304
14	SPRING WASHER	AISI 304
15	BLOT	AISI 304
16	PREVALONG DEVICE	AISI 304
17	LOCKING	AISI 304
18	COVER	PLASTIC



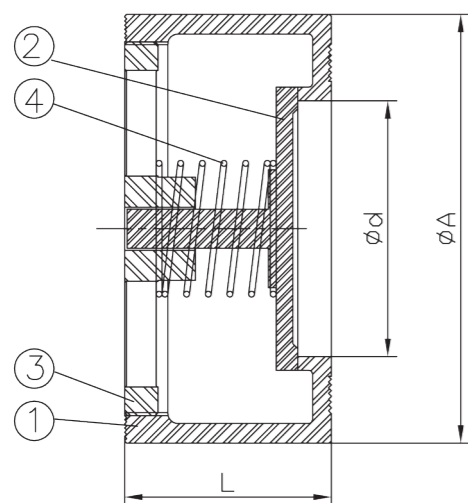
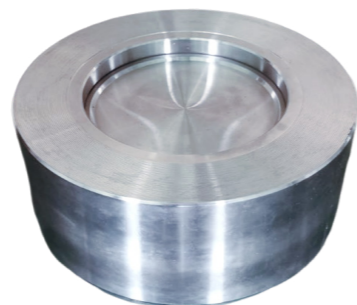
DIMENSIONS

UNIT : mm

SIZE		ød	L	L2	H	W	ØK1	ØK2	R1	R2
NPS	DN									
1/2"	15	9.5	118	59	44.5	132	42	50	3	3.5
3/4"	20	15.8	127	63.5	48	132	42	50	3	3.5
1"	25	22.2	152	47.5	59	160	42	50	3	3.5
1 1/2"	40	35	175	87	72	205	50	70	3.5	4.5
2"	50	47.5	190	95	82	205	50	70	3.5	4.5
2 1/2"	65	60	228	107	100	317	70	102	4.5	5.5
3"	80	73	260	122	126	317	102	125	5.5	6.5
4"	100	97.4	289	159	153.5	317	102	125	5.5	6.5

HE-811

Wafer Check Valve
for Flange connection 5", 6", 8"



Sizes range	5"~ 8" (DN125 ~ DN200)
Port availability	Reduce port
Nominal pressure	PN25
Body material	EN10213, 1.4408
Trim material	Stainless steel
Installation	PN10 / PN16 / PN25 / CL150
Note	Liquid fluid only

MATERIAL LIST

No.	PART NAME	SPECIFICATION
1	BODY	EN10313-4, 1.4408
2	DISC	EN10313-4, 1.4408
3	CAP	EN10313-4, 1.4408
4	SPRING	AISI SS316

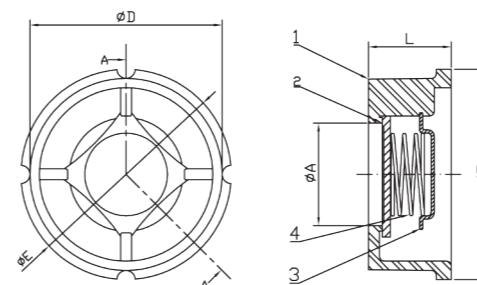
DIMENSIONS

UNIT : mm

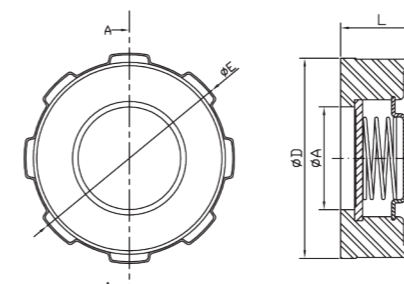
SIZE		inch	ϕd	ϕA	L
NPS	DN				
5"	125	5	105	187	90
6"	150	6	130	217	105
8"	200	8	170	273	140

HE-812

Wafer Check Valve
for Flange connection 1/4"~4"



FOR SIZE DN15~DN65



FOR SIZE DN80~DN100

Sizes range	1/2"~ 4" (DN15 ~ DN100)
Nominal pressure	PN40
Body material	EN10213, 1.4408
Trim material	Stainless steel
End connection	PN10 / PN16 / PN25 / PN40
Thickness	DIN3202, K4
Note	Liquid fluid only

MATERIAL LIST

No.	PART NAME	SPECIFICATION
1	BODY	EN10213, 1.4408
2	DISC	AISI 316
3	SPRING HOLDER	AISI 316
4	SPRING	AISI 316

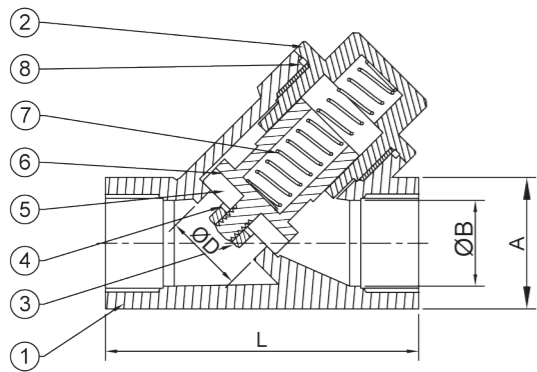
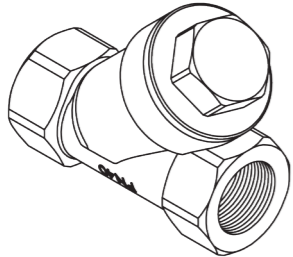
DIMENSIONS

UNIT : mm

SIZE		\uparrow mbar	\rightarrow mbar	\downarrow mbar	ϕA	ϕD	ϕE
NPS	DN						
1/2"	15	25	23	21	15	41	51
3/4"	20	25	23	21	20	46	61
1"	25	25	23	21	25	56	71
1 1/4"	32	27	24	21	32	73	80
1 1/2"	40	29	25	21	39	86	93
2"	50	29	25	21	50	96	107
2 1/2"	65	31	25	21	62	115	127
3"	80	32	26	21	76	131	142
4"	100	33	27	21	96	152	168

▶ RV-PN40

PN40 Threaded End Y-Type Spring Check Valve



Sizes range	¼"~ 2" (DN08 ~ DN50)
Nominal pressure	PN40
Temp.rating	-10°C~180°C
Body material	EN10213, 1.4408
Trim material	Stainless steel
Installation	Threaded end
Note	Liquid fluid only

MATERIAL LIST

No.	PART NAME	SPECIFICATION
1	BODY	1.4408
2	CAP	1.4408
3	BOLT	SUS304
4	WASHER	SUS304
5	SEAT	PTFE
6	PISTON	1.4408
7	SPRING	SUS316
8	GASKET	PTFE

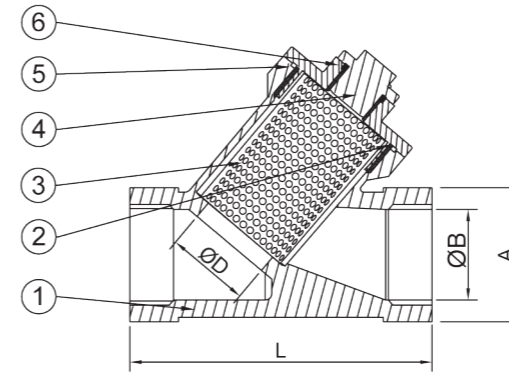
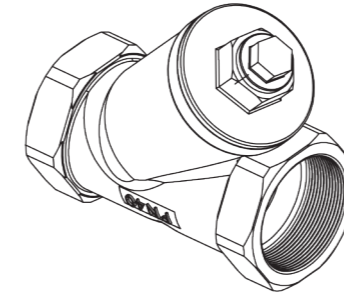
DIMENSIONS

UNIT : mm

SIZE		L	A	øB	øD
NPS	DN				
¼"	8	65	23.8	11.5	15
⅜"	10	65	23.8	14	15
½"	15	65	27.2	18.5	15
¾"	20	80	33	23.5	20
1"	25	90	42	29.5	25
1¼"	32	105	49.4	37	35
1½"	40	120	56	44	40
2"	50	140	69	54	50

▶ YS-PN40

PN40 Y-Type Strainer



Sizes range	¼"~ 2" (DN08 ~ DN50)
Nominal pressure	PN40
Temp.rating	-10°C~180°C
Body material	EN10213, 1.4408
Trim material	Stainless steel
Installation	Threaded end
Note:	Liquid fluid only

MATERIAL LIST

No.	PART NAME	SPECIFICATION
1	BODY	1.4408
2	CAP	1.4408
3	SCREEN	316
4	PLUG	1.4408
5	GASKET	PTFE
6	PACKING	PTFE

DIMENSIONS

UNIT : mm

SIZE		L	A	øB	øD
NPS	DN				
¼"	8	65	23.8	11.5	15
⅜"	10	65	23.8	14	15
½"	15	65	27.2	18.5	15
¾"	20	80	33	23.5	20
1"	25	90	42	29.5	25
1¼"	32	105	49.4	37	35
1½"	40	120	56	44	40
2"	50	140	69	54	50